

Gateway Cities & Rivers Urban Greening Resources



LYRIC
DESIGN & PLANNING

GATEWAY CITIES & RIVERS STUDY AREA

Relevant Urban Greening Resources

Los Angeles Countywide Comprehensive Park & Recreation Needs Assessment (LACPRNA)

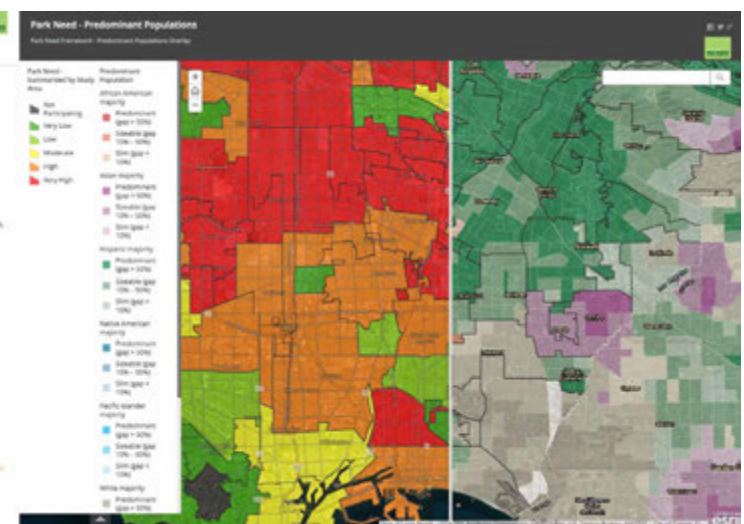
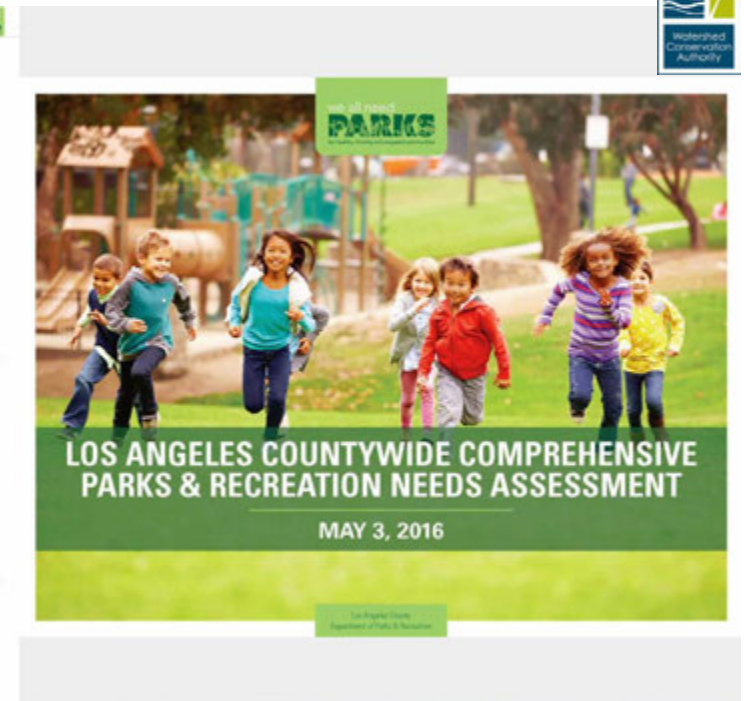
Includes overall park inventory and metrics, and study area profiles

Southern California Area of Governments (SCAG)

Regional Transportation Plan
Local Profile Reports for each city



Southern California Association of Governments
ADOPTED APRIL 2012



GATEWAY CITIES & RIVERS STUDY AREA

Relevant Urban Greening Resources

Transportation Plans

Gateway Cities Council of Governments (COG) Strategic Transportation Plan (STP)

Metro Active Transportation Strategic Plan (ATSP)

West Santa Ana Branch Transit Corridor Technical Refinement Study

I-710 Livability Initiative

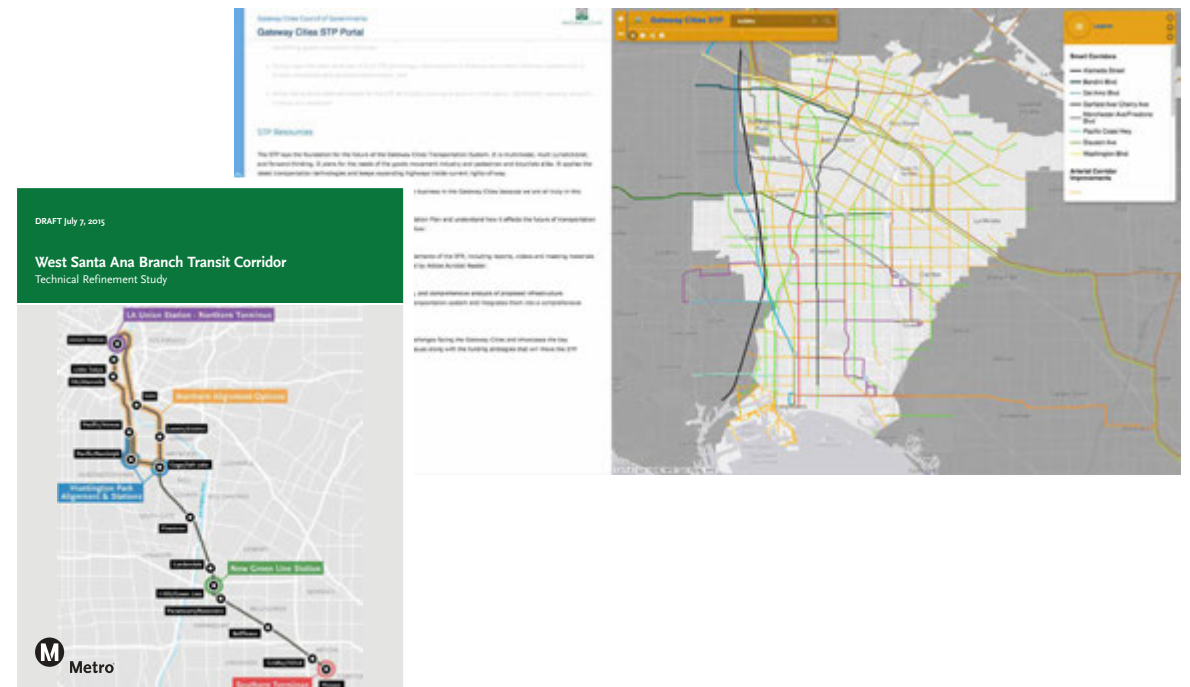
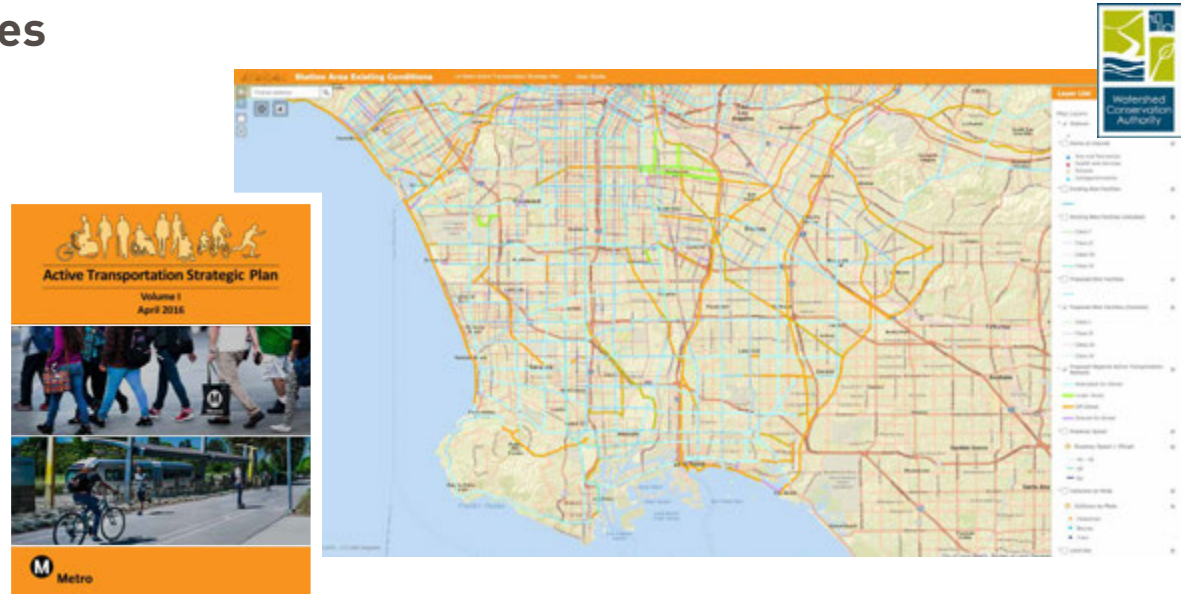
A plan that acknowledges the need for and proposes pedestrian connectivity in about 30 locations along the 710 freeway, known its high truck traffic as a feeder to and from the Port of Long Beach



Historical Information

The Homestead Museum and Blog

Creating advocates for history through the stories of greater Los Angeles



GATEWAY CITIES & RIVERS STUDY AREA



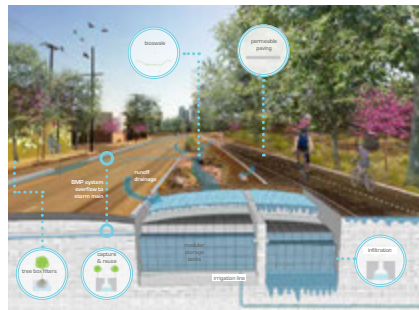
Relevant Urban Greening Resources

Greenways to Rivers Arterial Stormwater System (GRASS)

a region-wide proposed implementation of stormwater infiltration project by LA Sanitation & Cal Poly Pomona, Department of Landscape Architecture - 606 Studio



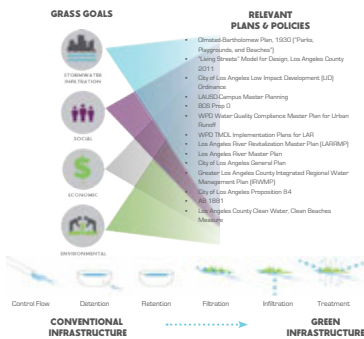
GREENWAY DESIGN



- SAMPLE PLANTS**
- Achillea millefolium* / Yarnie
 - Conoclinium gracile* / Santa Ana Cassineweed
 - Palafoxia racemosa* / Western Dyanthus
 - Populus fremontii* / Western Cottonwood
 - Suaeda macrostachya* / Pink Saltmarsh
 - Juncea patens* / California Dry Rush
 - Juncea phaeospikeata* / Brown Feathered Rush
 - Schoenoplectus maritimus* / Common Saltmarsh Bulrush

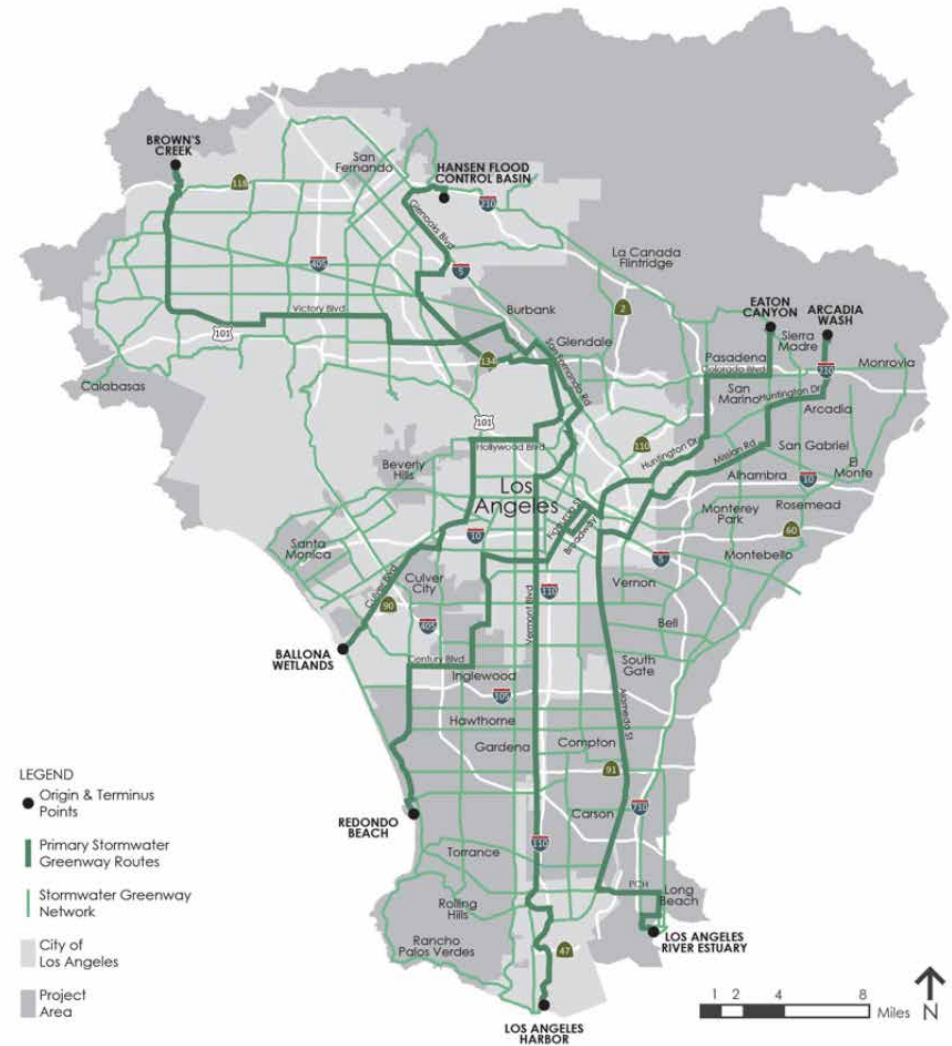
STORMWATER HARVESTING
Following the protocols of the rain garden, street-side bioswales can filter street catchment and to absorb excess runoff that permeates through various levels of bio-filtration before reaching an underground storage system. Modular tanks create versatile storage volume capacities, accommodating the stochastic local trees, with excess runoff draining to an infiltration chamber. This system reduces pressure on potable water supply by recharging groundwater supplies, decreases demand on existing stormwater infrastructure, and introduces an economically viable stormwater water source that is up to 75% less expensive than traditional stormwater management techniques (Snyder, Macroplastic Catchment Management Authority WSUD, 2012).

Plants from California Stormwater Quality Association, Los Angeles Council for Watershed Health & USGS Owyhee Center for Ecological Restoration



“THE CITY HAS THE ABILITY TO INCORPORATE MULTIPLE SYSTEMS. NATURE IS A WHOLE THAT NOT ONLY EMBRACES THE CITY, BUT HAS POWERFUL IMPLICATIONS FOR HOW IT IS BUILT AND MAINTAINED”

- SPIRN 1984



GATEWAY CITIES & RIVERS STUDY AREA



Relevant Urban Greening Resources

River Master Plans

Compton Creek Regional Garden Park Master Plan

Coyote Creek Bikeway Master Plan

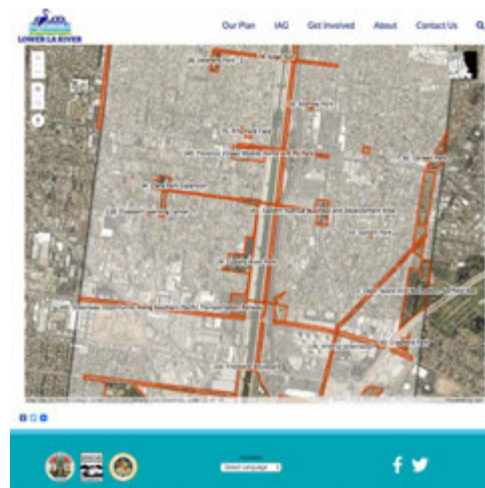
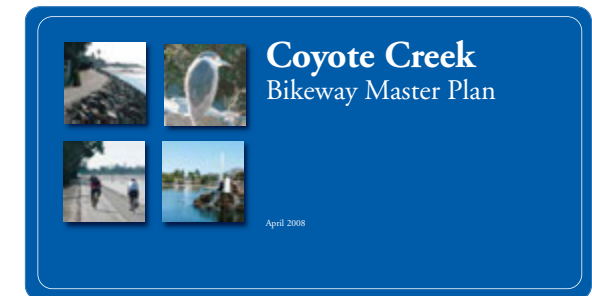
Coyote Creek Master Plan

Lower Los Angeles River Revitalization Master Plan (LLAR)

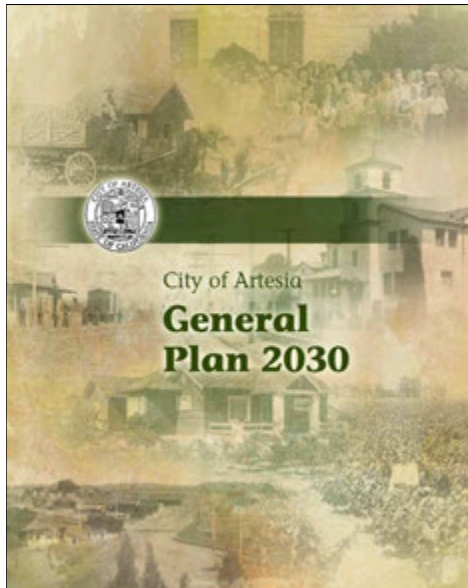
**San Gabriel River Corridor Master Plan:
A Common Thread Rediscovered**

(2006, Los Angeles County DPW and DPR)

addresses recreation, habitat, flood management, and open space for the San Gabriel River. Divides the SG River into 7 reaches each with different land use opportunities.



Relevant Urban Greening Resources



we all need **PARKS**
for healthy, thriving and engaged communities.

City of Artesia STUDY AREA PROFILE

STUDY AREA ID #40

- BASE MAP
- PARK METRICS
- WHERE ARE PARKS MOST NEEDED
- AMENITY QUANTITIES AND CONDITIONS
- PARK NEEDS FRAMEWORK
- PROJECT COST ESTIMATES
- PROJECT REPORTING FORM
- COMMUNITY ENGAGEMENT FORM

Los Angeles Countywide Comprehensive Park & Recreation Needs Assessment
APPENDIX A

3.5 Southern Terminus - Artesia

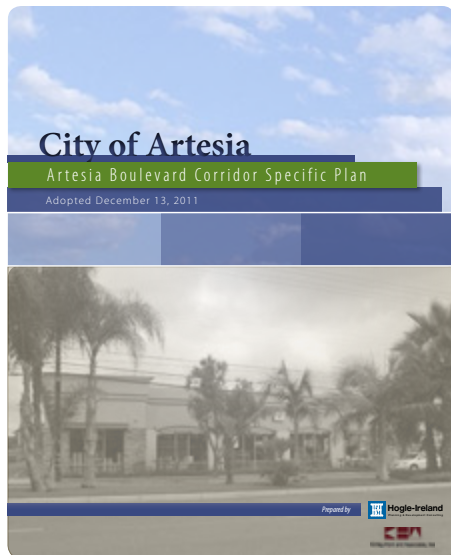
The SCAC AA included a Bloomfield Station in the City of Cerritos to serve as the Southern Terminus of the WSAB corridor in Los Angeles County (Figure 3-31). Upon a request by the City of Cerritos, the Bloomfield Station was removed from further consideration. The next station to the north was the Pioneer Station in the City of Artesia, assumed to function as a through station. This study area analyzed how the Pioneer Station would function as a Southern Terminus for the WSAB corridor in lieu of the Bloomfield Station.

The Pioneer Station/Southern Terminus location was analyzed for its feasibility and to determine what kind of challenges may exist based on no more than 5% level of design. The study findings were based on meetings with the Cities of Artesia and Cerritos, applying Metro station design criteria and operational requirements, and an urban design analysis of the station area.

Key plan showing location of the Southern Terminus Study

Figure 3-31: The City of Cerritos requested the SCAC AA Bloomfield Station be dropped from further consideration, resulting in a need to analyze Pioneer Station as the WSAB corridor's Southern Terminus within Los Angeles County.

98 | 3 Station Studies



SCAG
SOUTHERN CALIFORNIA ASSOCIATION OF GOVERNMENTS

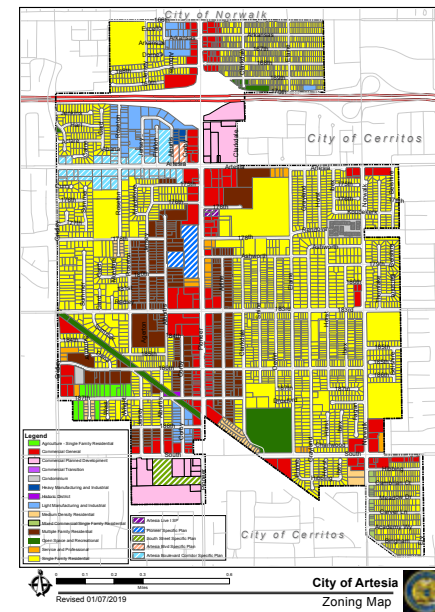
Profile of the City of Artesia

Southern California Association of Governments (SCAG) Regional Council includes 69 districts which represent 191 cities and 6 counties in the SCAG region
SCAG Regional Council District 23 includes Artesia, Cerritos, Hawaiian Gardens, and Norwalk
District 23 is currently Vacant.

LOCAL PROFILES REPORT 2019

This profile report was prepared by the Southern California Association of Governments and shared with City of Artesia. SCAG provides local governments with a variety of benefits and services including, for example, data and information, GIS training, planning and technical assistance, and sustainability planning grants.

May 2019
Southern California Association of Governments



Relevant Urban Greening Resources

we all need PARKS
The Healthy, Active and Prosperous Communities Initiative


City of Bell
STUDY AREA PROFILE
STUDY AREA ID #71

- BASE MAP
- PARK METRICS
- WHERE ARE PARKS MOST NEEDED
- AMENITY QUANTITIES AND CONDITIONS
- PARK NEEDS FRAMEWORK
- PROJECT COST ESTIMATES
- PROJECT REPORTING FORM
- COMMUNITY ENGAGEMENT FORM

Los Angeles Countywide Comprehensive Park & Recreation Needs Assessment
APPENDIX A

CITY OF BELL
2030 COMPREHENSIVE GENERAL PLAN

**CITY OF BELL 2030
GENERAL PLAN**



CITY OF BELL DEPARTMENT OF COMMUNITY DEVELOPMENT
6330 PINE AVENUE
BELL, CALIFORNIA 90201

Adopted May 9, 2018 by Resolution No. 2018-18

Page 1

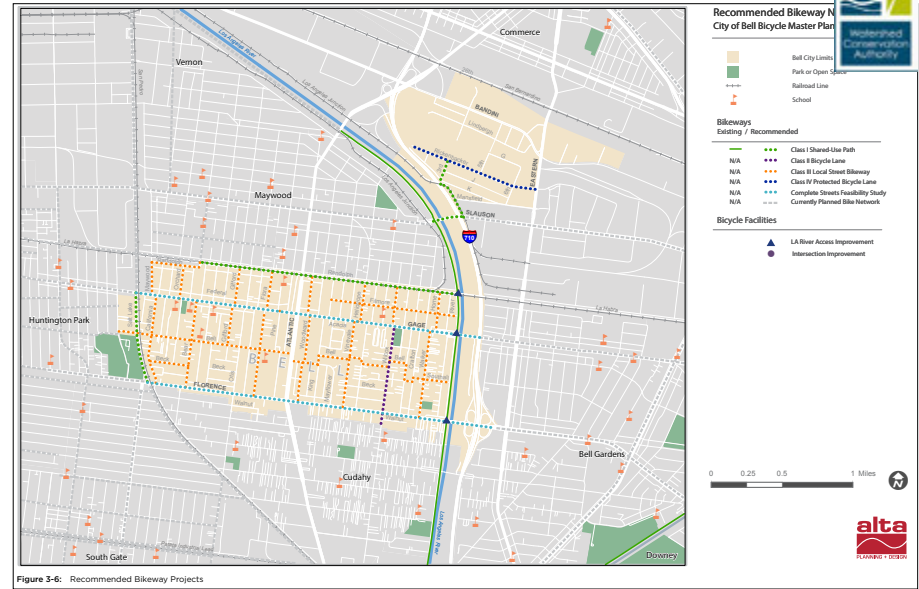



Figure 3-6: Recommended Bikeway Projects

SCAG
SOUTHERN CALIFORNIA ASSOCIATION OF GOVERNMENTS

Profile of the City of Bell

Southern California Association of Governments (SCAG) Regional Council includes 69 districts which represent 191 cities and 6 counties in the SCAG region

SCAG Regional Council District 27 includes Bell, Bell Gardens, Commerce, Cudahy, Huntington Park, Maywood, and Vernon
Represented by: Hon. Ali Saleh



LOCAL PROFILES REPORT 2019

This profile report was prepared by the Southern California Association of Governments and shared with the City of Bell. SCAG provides local governments with a variety of benefits and services including, for example, data and information, GIS training, planning and technical assistance, and sustainability planning grants.

May 2019
Southern California Association of Governments

alta
PLANNING + DESIGN

**CITY OF BELL
BICYCLE MASTER PLAN**

June 2016



PREPARED BY:
Alta Planning + Design

Note: links to websites can be accessed by clicking on text and/or images



Relevant Urban Greening Resources

SCAG
SOUTHERN CALIFORNIA ASSOCIATION OF GOVERNMENTS

Profile of the City of Bellflower
Southern California Association of Governments (SCAG) Regional Council includes 69 districts which represent 293 cities and 6 counties in the SCAG region
SCAG Regional Council District 24 includes Bellflower, Lakewood, Paramount, and Signal Hill
Represented by Hon. Sonny R. Santa Iles

LOCAL PROFILES REPORT 2019

This profile report was prepared by the Southern California Association of Governments and shared with the City of Bellflower. SCAG provides local governments with a variety of benefits and services including, for example, data and information, GIS training, planning and technical assistance, and sustainability planning grants.

May 2019
Southern California Association of Governments

PARK METRICS

PARK LAND: Is there enough park land for the population?
53 PARK ACRES within study area | 77,502 POPULATION | 0.7 PARK ACRES PER 1,000

The county average is 3.3 park acres per 1,000

PARK ACCESSIBILITY: Is park land located where everyone can access it?
46% of population living WITHIN 1/2 MILE of a park
The county average is 69% of the population living within 1/2 mile of a park

PARK PRESSURE
How much park land is available to residents in the area around each park?

H. Byrum Zinn Community Park and Trail (3.1 Acres) 0.69 park acres per 1,000	Caruthers Park (14.09 Acres) 1.94 park acres per 1,000
Caruthers Park North (4.53 Acres) 1.04 park acres per 1,000	Chevron Pocket Park (0.18 Acres) 0.02 park acres per 1,000
Constitution Park (2.16 Acres) 0.25 park acres per 1,000	John S. Simms Park (12.56 Acres) 1.21 park acres per 1,000
Library Gardens (0.43 Acres) 0.06 park acres per 1,000	Palm Park (2.98 Acres) 0.24 park acres per 1,000
Pirate Park (0.18 Acres) 0.06 park acres per 1,000	Thompson Park (12.87 Acres) 1.24 park acres per 1,000

APPENDIX A | Los Angeles Countywide Comprehensive Park & Recreation Needs Assessment

STATION AREA CONCEPT PLAN

WSAB - Bellflower Station TOD Concepts

- Existing Pioneer Blvd "Main Street"
- Retail Plaza
- Transit Plaza
- Shared Parking Structure
- Mixed-Use Development
- Boardwalk Mixed-Use
- Existing Single Family Neighborhood
- Existing Arroyo Park
- Historic Pacific Electric Train Depot
- Proposed City Parking
- Transit Channel Mixed-Use
- Active Retail Plaza
- Mixed-Use Development
- Existing Longformart Retail
- Major Events Center (LA County)
- Single Family Neighborhood
- Existing Multi-Family Development

STATION AREA CONCEPT

BELFLOWER-PARAMOUNT
Active Transportation Plan
June 2019

OCTOBER 2019

THE DOWNTOWN BELLFLOWER TRANSIT ORIENTED DEVELOPMENT SPECIFIC PLAN (TOD SP)

General Plan Land Use in City of Bellflower

BELL GARDENS

Relevant Urban Greening Resources

SCAG
SOUTHERN CALIFORNIA ASSOCIATION OF GOVERNMENTS

Profile of the City of Bell Gardens
Southern California Association of Governments (SCAG) Regional Council includes 69 districts which represent 291 cities and 6 counties in the SCAG region
SCAG Regional Council District 27 includes Bell, Bell Gardens, Commerce, Cudahy, Huntington Park, Maywood, and Vernon
Represented by: Hon. Al Saleh

LOCAL PROFILES REPORT 2019

This profile report was prepared by the Southern California Association of Governments and shared with the City of Bell Gardens. SCAG provides local governments with a variety of benefits and services including, for example, data and information, GIS training, planning and technical assistance, and sustainability planning grants.

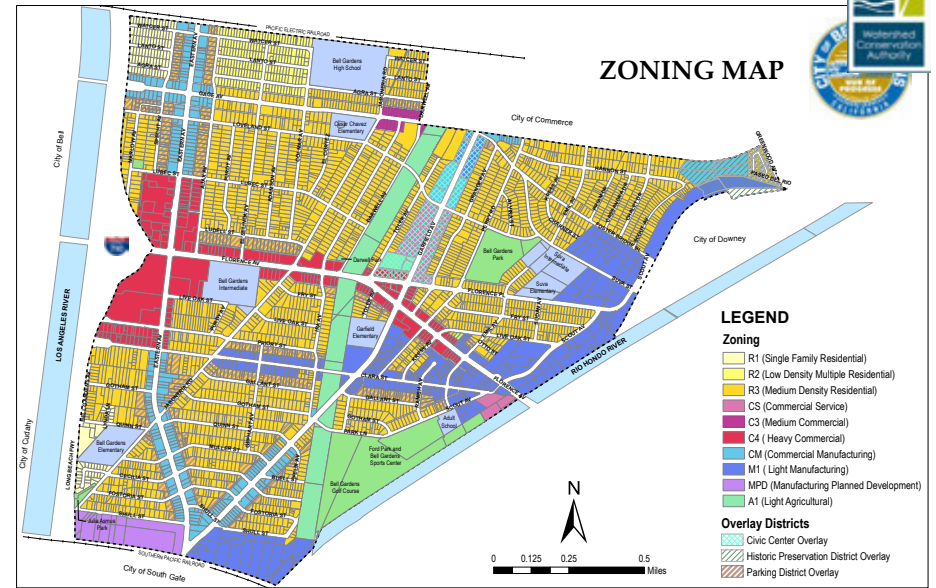
May 2019
Southern California Association of Governments

we all need
PARKS
The Healthy, Thriving and Inclusive Communities

City of Bell Gardens STUDY AREA PROFILE
STUDY AREA ID #114

- BASE MAP
- PARK METRICS
- WHERE ARE PARKS MOST NEEDED
- AMENITY QUANTITIES AND CONDITIONS
- PARK NEEDS FRAMEWORK
- PROJECT COST ESTIMATES
- PROJECT REPORTING FORM
- COMMUNITY ENGAGEMENT FORM

Los Angeles Countywide Comprehensive Park & Recreation Needs Assessment
APPENDIX A



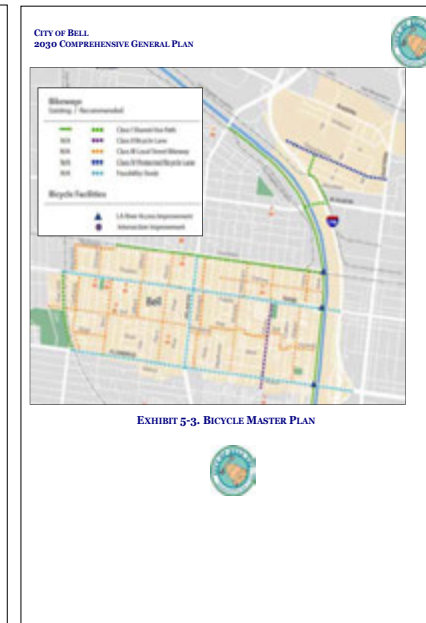
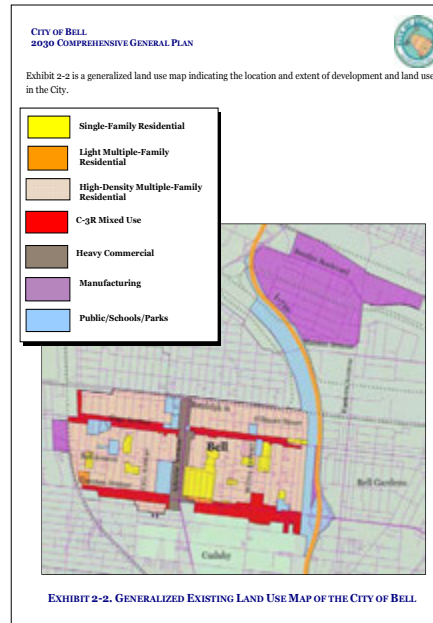
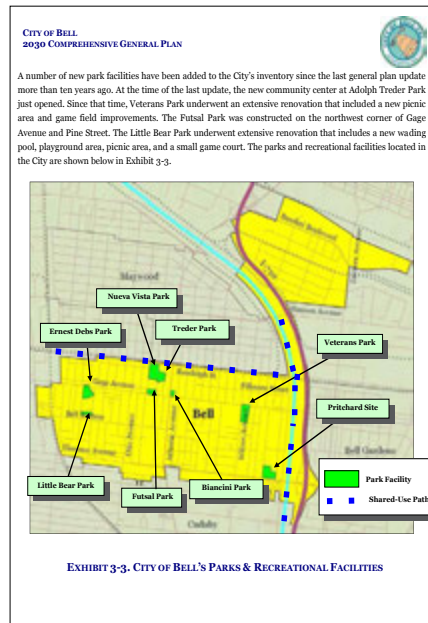
CITY OF BELL
2030 COMPREHENSIVE GENERAL PLAN

CITY OF BELL 2030 GENERAL PLAN

CITY OF BELL DEPARTMENT OF COMMUNITY DEVELOPMENT
6330 PINE AVENUE
BELL, CALIFORNIA 90201

Adopted May 9, 2018 by Resolution No. 2018-18

PAGE 1





Relevant Urban Greening Resources

we all need PARKS
The Healthy, Happy, and Wealthy City Connection

City of Cerritos \ Unincorporated Cerritos
STUDY AREA PROFILE
STUDY AREA ID #184

- BASE MAP
- PARK METRICS
- WHERE ARE PARKS MOST NEEDED
- AMENITY QUANTITIES AND CONDITIONS
- PARK NEEDS FRAMEWORK
- PROJECT COST ESTIMATES
- PROJECT REPORTING FORM
- COMMUNITY ENGAGEMENT FORM

Los Angeles Countywide Comprehensive Park & Recreation Needs Assessment
APPENDIX A

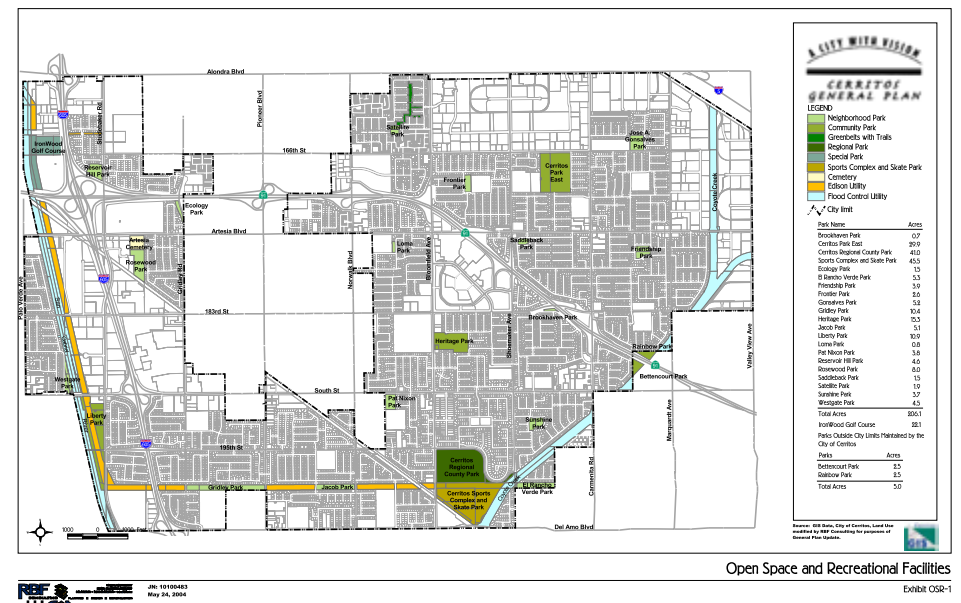
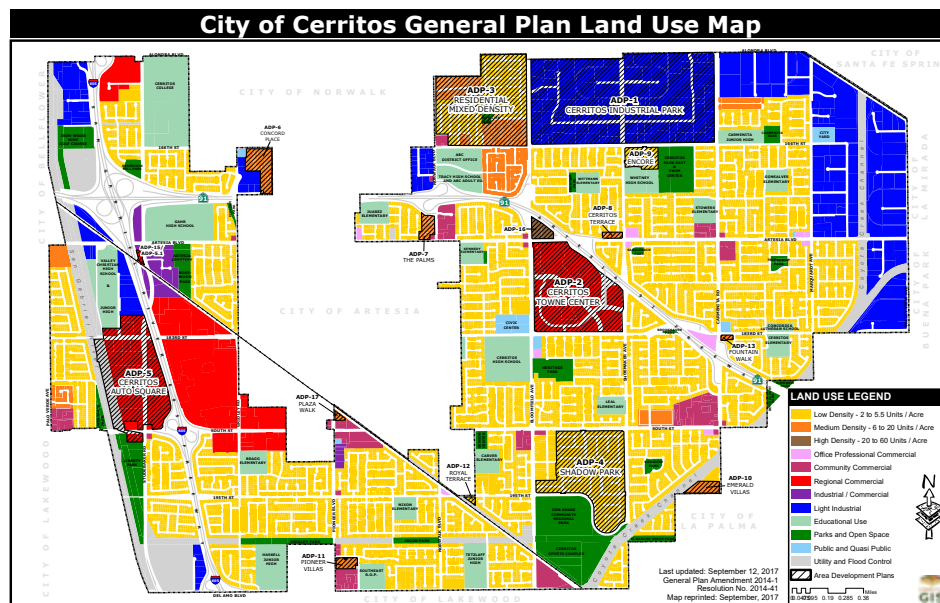
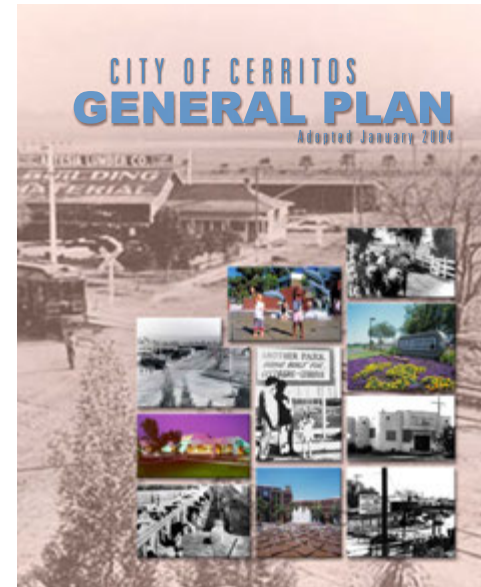
SCAG
SOUTHERN CALIFORNIA ASSOCIATION OF GOVERNMENTS

Profile of the City of Cerritos
Southern California Association of Governments (SCAG) Regional Council includes 49 districts which represent 131 cities and 6 counties in the SCAG region. SCAG Regional Council District 23 includes Artesia, Cerritos, Hawaiian Gardens, and Norwalk. District 23 is currently Vacant.

LOCAL PROFILES REPORT 2019

This profile report was prepared by the Southern California Association of Governments and shared with the City of Cerritos. SCAG provides local governments with a variety of benefits and services including, for example, data and information, GIS training, planning and technical assistance, and sustainability planning grants.

May 2019
Southern California Association of Governments



Note: links to websites can be accessed by clicking on text and/or images

COMMERCE



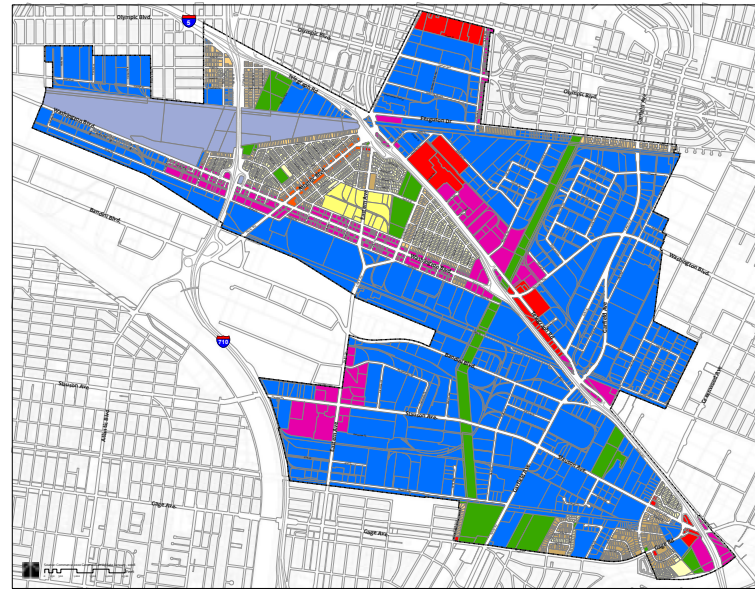
Relevant Urban Greening Resources

we all need PARKS
The healthy, thriving and engaged communities we need.

**City of Commerce
STUDY AREA PROFILE**
STUDY AREA ID #95

- BASE MAP
- PARK METRICS
- WHERE ARE PARKS MOST NEEDED
- AMENITY QUANTITIES AND CONDITIONS
- PARK NEEDS FRAMEWORK
- PROJECT COST ESTIMATES
- PROJECT REPORTING FORM
- COMMUNITY ENGAGEMENT FORM

Los Angeles Countywide Comprehensive Park & Recreation Needs Assessment
APPENDIX A



LAND USE MAP
City of Commerce, CA

LEGEND

Land Use Designation

- Atlantic Mixed Use
- Commercial/Manufacturing
- Commercial
- Low Density Residential
- Medium Density Residential
- High Density Residential
- Housing Opportunity
- Transportation
- Industrial
- Public Facilities
- City Boundary

Revisions

No.	Description	Date

SCAG
SOUTHERN CALIFORNIA ASSOCIATION OF GOVERNMENTS

Profile of the City of Commerce
Southern California Association of Governments (SCAG) Regional Council includes 69 districts which represent 191 cities and 6 counties in the SCAG region

SCAG Regional Council District 27 includes Bell, Bell Gardens, Commerce, Cudahy, Huntington Park, Maywood, and Vernon
Represented by: Hon. Ali Saleh

LOCAL PROFILES REPORT 2019

This profile report was prepared by the Southern California Association of Governments and shared with the City of Commerce. SCAG provides local governments with a variety of benefits and services including, for example, data and information, GIS training, planning and technical assistance, and sustainability planning grants.

May 2019
Southern California Association of Governments

**City of Commerce
2020 General Plan**

City of Commerce
2535 Commerce Way
Commerce, California 90040

January 2008

City of Commerce General Plan • Adopted January 2008
Page 1

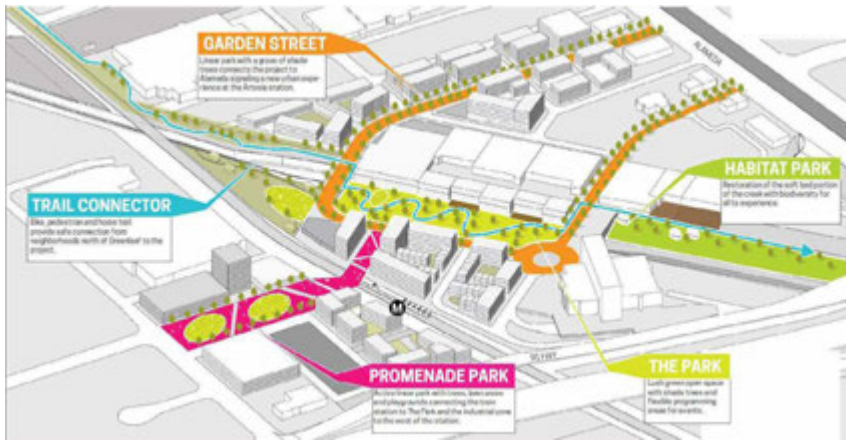
Modelo Project Concept at Veterans Memorial Park + Rio Hondo

DUDEK

FIGURE 6A
Project Rendering - Northeast View
Commerce/Modelo/1401/003



Relevant Urban Greening Resources



Draft Compton
General Plan 2030

January 2011

**Compton Creek Trails
Community Assessment**

**COMPTON ARTESIA
SPECIFIC PLAN**

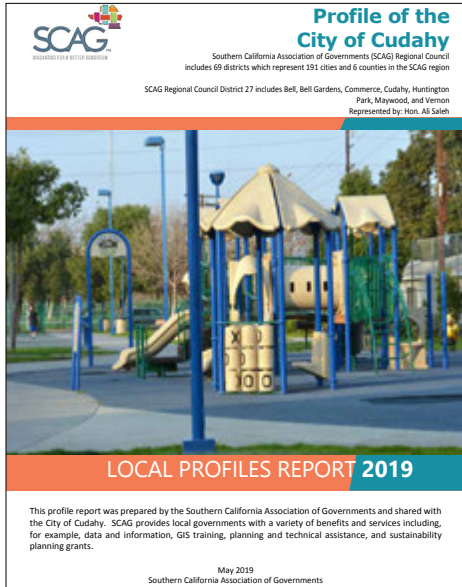
CITY OF COMPTON, CA
SEPTEMBER 14, 2019

**City of Compton
Bicycle Master Plan**

City of Compton, California | May 2015

Compton Creek Regional Garden Park Master Plan

Relevant Urban Greening Resources



SCAG
SOUTHERN CALIFORNIA ASSOCIATION OF GOVERNMENTS

Profile of the City of Cudahy
Southern California Association of Governments (SCAG) Regional Council includes 69 districts which represent 291 cities and 6 counties in the SCAG region
SCAG Regional Council District 27 includes Bell, Bell Gardens, Commerce, Cudahy, Huntington Park, Maywood, and Vernon
Represented by: Hon. Al Saleh

LOCAL PROFILES REPORT 2019

This profile report was prepared by the Southern California Association of Governments and shared with the City of Cudahy. SCAG provides local governments with a variety of benefits and services including, for example, data and information, GIS training, planning and technical assistance, and sustainability planning grants.

May 2019
Southern California Association of Governments



Aerial view in Cudahy showing typical driveway configuration

image source: www.loopnet.com



Cudahy Ranch

Over Acres at More Than \$200 to \$300

Abundant Free Water Fertile Soil

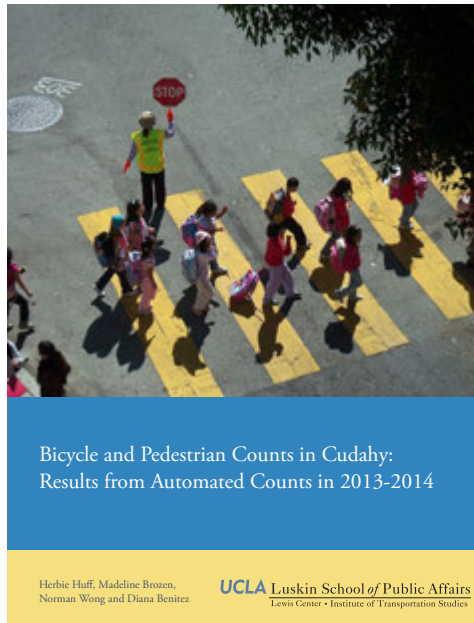
20 MINUTES from 6th and Main St.

A Ranch Home At the City's Gate

SEE IT TODAY

Cudahy Ranch

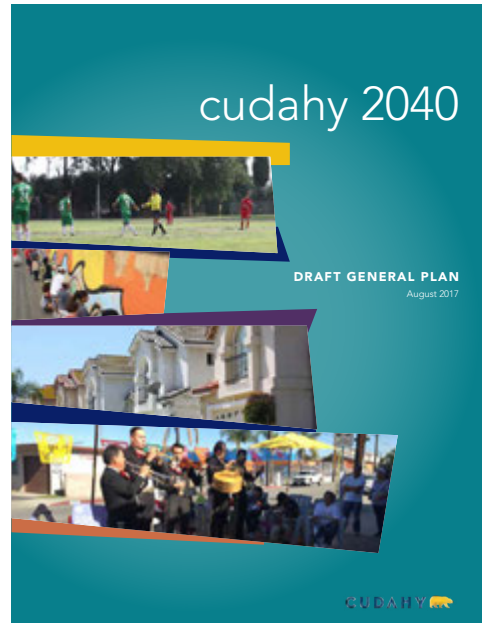
image source: Homestead Museum



Bicycle and Pedestrian Counts in Cudahy: Results from Automated Counts in 2013-2014

Herbie Huff, Madeline Brozen, Norman Wong and Diana Benitez

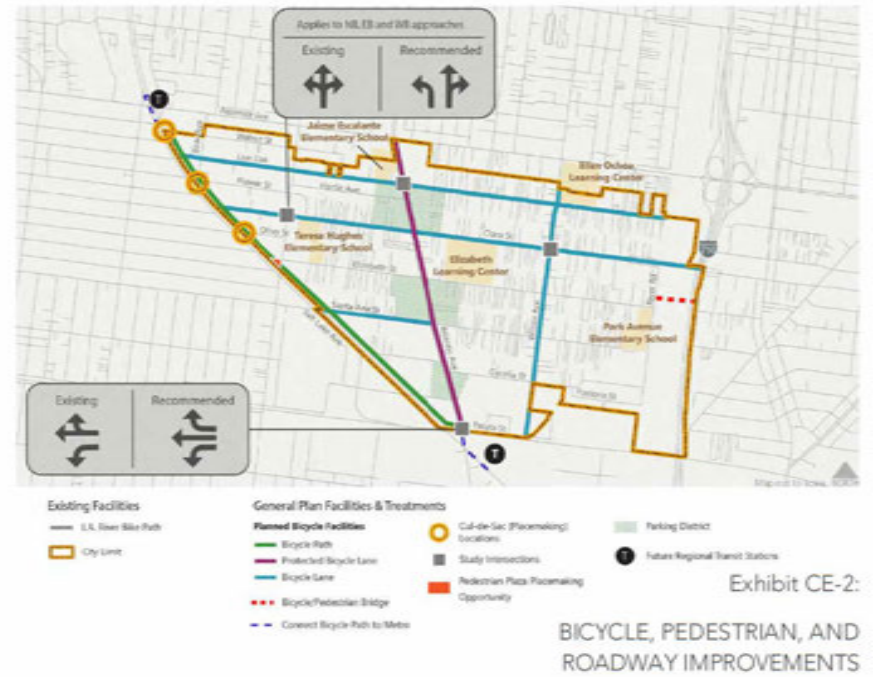
UCLA Luskin School of Public Affairs
Lewis Center • Institute of Transportation Studies



cudahy 2040

DRAFT GENERAL PLAN
August 2017

CUDAHY



Applies to MLEB and WB approaches

Existing Recommended

Existing Recommended

Existing Facilities

- U.S. Slow Bike Path
- City Limit

General Plan Facilities & Treatments

Planned Bicycle Facilities:

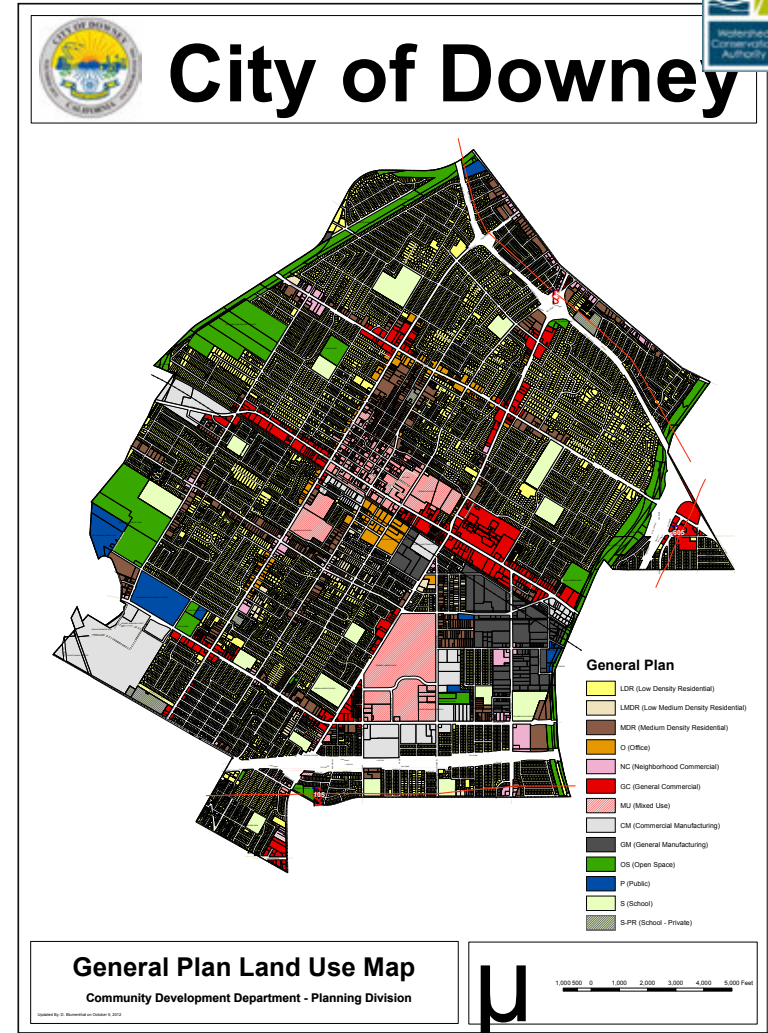
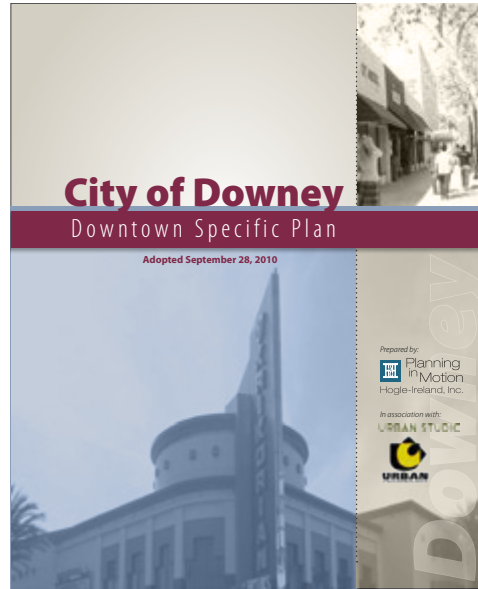
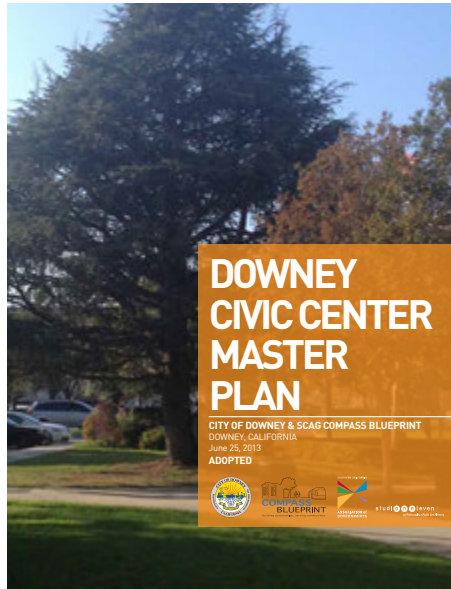
- Bicycle Path
- Protected Bicycle Lane
- Bicycle Lane
- Bicycle/Pedestrian Bridge
- Convert Bicycle Path to MLEB

Other Facilities:

- Cd-de-Sac (Floormarking) Locations
- Steady Intersections
- Pedestrian Plaza/Placemaking Opportunity
- Parking District
- Future Regional Transit Stations

Exhibit CE-2: BICYCLE, PEDESTRIAN, AND ROADWAY IMPROVEMENTS

Relevant Urban Greening Resources



we all need **PARKS**
for healthy, thriving and engaged LA communities

City of Downey
STUDY AREA PROFILE
STUDY AREA ID #162

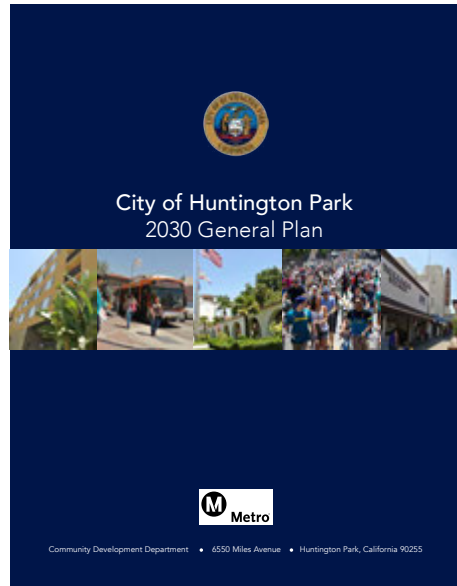
- BASE MAP
- PARK METRICS
- WHERE ARE PARKS MOST NEEDED
- AMENITY QUANTITIES AND CONDITIONS
- PARK NEEDS FRAMEWORK
- PROJECT COST ESTIMATES
- PROJECT REPORTING FORM
- COMMUNITY ENGAGEMENT FORM

Los Angeles Countywide Comprehensive Park & Recreation Needs Assessment
APPENDIX A



HUNTINGTON PARK

Relevant Urban Greening Resources



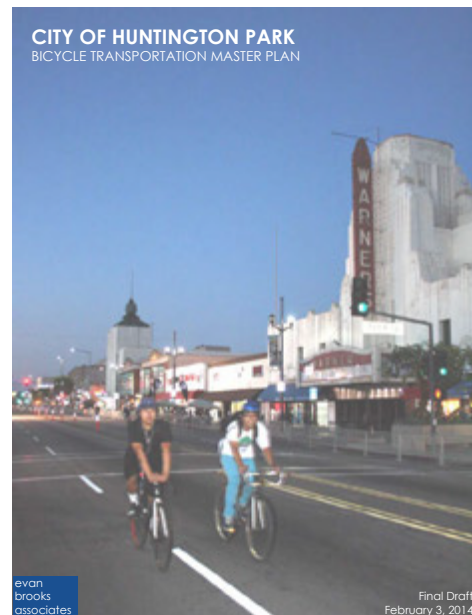
City of Huntington Park
2030 General Plan

Community Development Department • 4550 Miles Avenue • Huntington Park, California 90255




DOWNTOWN
HUNTINGTON PARK
SPECIFIC PLAN

AUGUST 4, 2008

CITY OF HUNTINGTON PARK
BICYCLE TRANSPORTATION MASTER PLAN

Final Draft
February 3, 2014



PARK METRICS

PARK LAND: Is there enough park land for the population?
40.5 PARK ACRES within study area | 58,941 POPULATION | 0.7 PARK ACRES PER 1,000

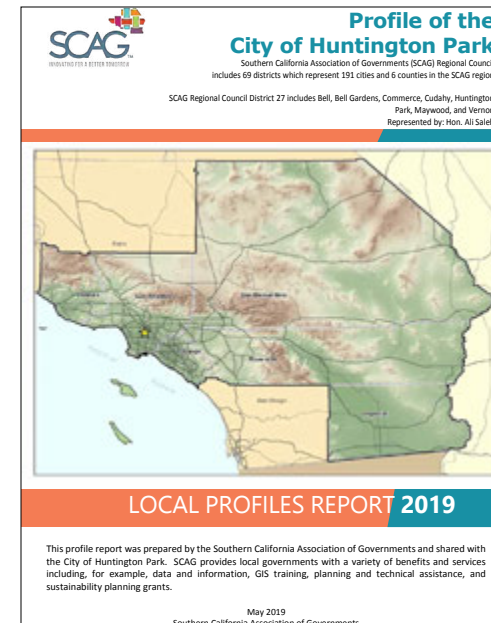
The county average is 3.3 park acres per 1,000

PARK ACCESSIBILITY: Is park land located where everyone can access it?
68% of population living WITHIN 1/2 MILE of a park
The county average is 49% of the population living within 1/2 mile of a park.

PARK PRESSURE
How much park land is available to residents in the area around each park?

- Chelsey Park (0.18 Acres) 0.02 park acres per 1,000
- Freedom Park (1.57 Acres) 0.22 park acres per 1,000
- Huntington Park Community Center (2.37 Acres) 1.8 park acres per 1,000
- Raul R. Perez Memorial Park (4.47 Acres) 0.84 park acres per 1,000
- Robert Keller Park (2.62 Acres) 0.12 park acres per 1,000
- Salt Lake Park (30.12 Acres) 1.58 park acres per 1,000

APPENDIX A Los Angeles Countywide Comprehensive Park & Recreation Needs Assessment



Profile of the City of Huntington Park
Southern California Association of Governments (SCAG) Regional Council
includes 69 districts which represent 191 cities and 6 counties in the SCAG region
SCAG Regional Council District 27 includes Bell, Bell Gardens, Commerce, Cudahy, Huntington Park, Maywood, and Vernon
Represented by: Hon. Ali Saleh

LOCAL PROFILES REPORT 2019

This profile report was prepared by the Southern California Association of Governments and shared with the City of Huntington Park. SCAG provides local governments with a variety of benefits and services including, for example, data and information, GIS training, planning and technical assistance, and sustainability planning grants.

May 2019
Southern California Association of Governments

Note: links to websites can be accessed by clicking on text and/or images



Relevant Urban Greening Resources

CITY OF LA MIRADA
DEDICATED TO SERVICE

STRATEGIC PLAN 2020

PARK METRICS

PARK LAND: Is there enough park land for the population?
 202 PARK ACRES within study area | **49,180** POPULATION | 4.1 PARK ACRES PER 1,000

The county average is 3.3 park acres per 1,000

PARK ACCESSIBILITY: Is park land located where everyone can access it?
60% of population living WITHIN 1/2 MILE of a park
 The county average is 48% of the population living within 1/2 mile of a park

PARK PRESSURE
 How much park land is available to residents in the area around each park?

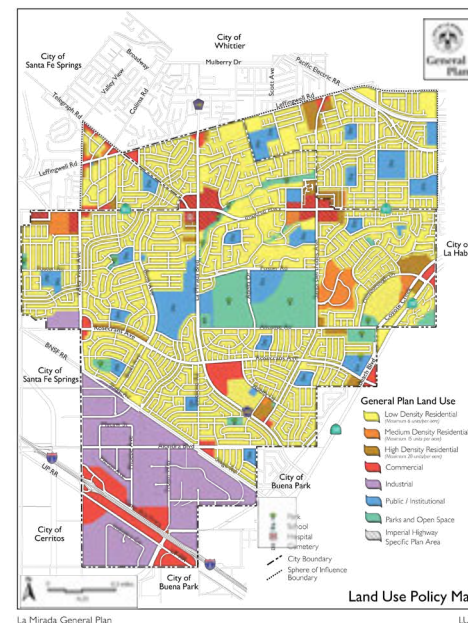
Anna J Martin Park (3.65 Acres) 0.76 park acres per 1,000	Behringer Park (26.69 Acres) 9.89 park acres per 1,000
Benton Athletic Facility (15.23 Acres) 9.72 park acres per 1,000	Creek Park (15.95 Acres) 2.7 park acres per 1,000
Frontier Park (4.17 Acres) 0.6 park acres per 1,000	Gardenhill Park (5.12 Acres) 0.6 park acres per 1,000
Kling Center Athletic Fields (5.29 Acres) 14.19 park acres per 1,000	La Mirada Community Gymnasium (1.09 Acres) 0.3 park acres per 1,000
La Mirada Community Reg. Park (76.5 Acres) 24.74 park acres per 1,000	Los Coyotes Athletic Facility (11.1 Acres) 6.17 park acres per 1,000

APPENDIX A Los Angeles Countywide Comprehensive Park & Recreation Needs Assessment



CITY OF LA MIRADA

Imperial Highway Specific Plan



LA MIRADA CREEK PARK MASTER PLAN

VIEW 1: BRIDGE AND TERRACED SEATING

VIEW 2: STROLL IN THE PARK

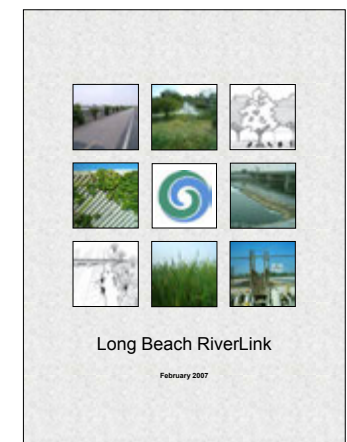
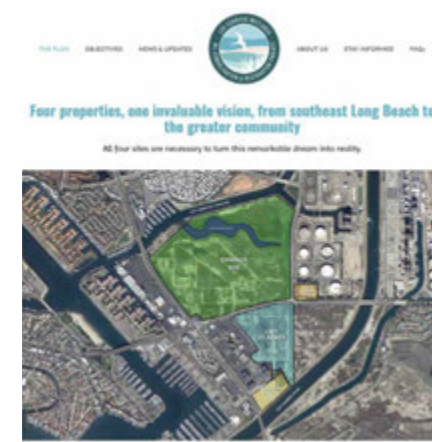
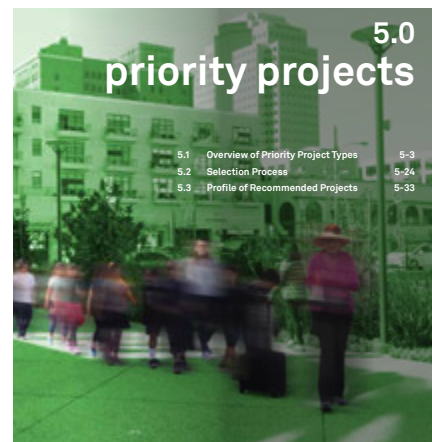
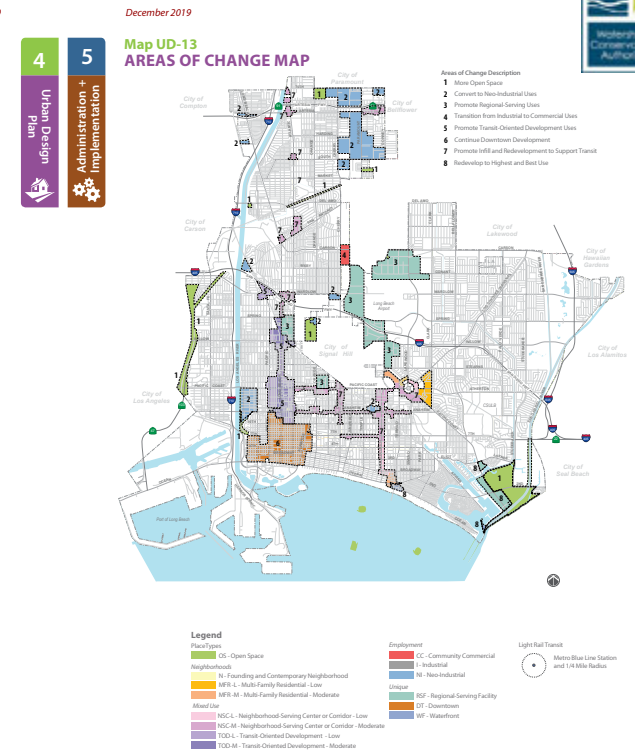
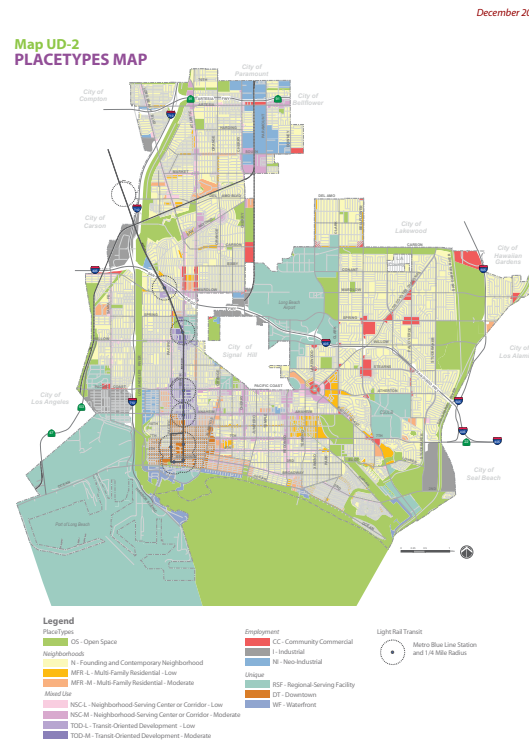
VIEW 3: GARDEN AND FITNESS+PLAY NODE

LONG BEACH

Relevant Urban Greening Resources



creating livable environments



Note: links to websites can be accessed by clicking on text and/or images



Relevant Urban Greening Resources

LYNWOOD TRANSIT AREA SPECIFIC PLAN

Public Review Draft

July 2016



Prepared For:
City of Lynwood
11130 Bullis Road
Lynwood, California 90262

Prepared By:
Rincon Consultants, Inc.
700 South Hill Street, Suite 1200
Los Angeles, California 90014

With Assistance From:
MK Planners, Inc.
Transit Communities Development Consultants
Transolutions, Inc.
Rifkin Transportation Planning Group
Arelano Associates
BAE Urban Economics
Sheppard, Mullin, Richter & Hampton LLP
TransSystems
RAW International



Ricardo Lara Linear Park

LYNWOOD TRANSIT AREA SPECIFIC PLAN

2.3 PLACEMAKING OPPORTUNITIES

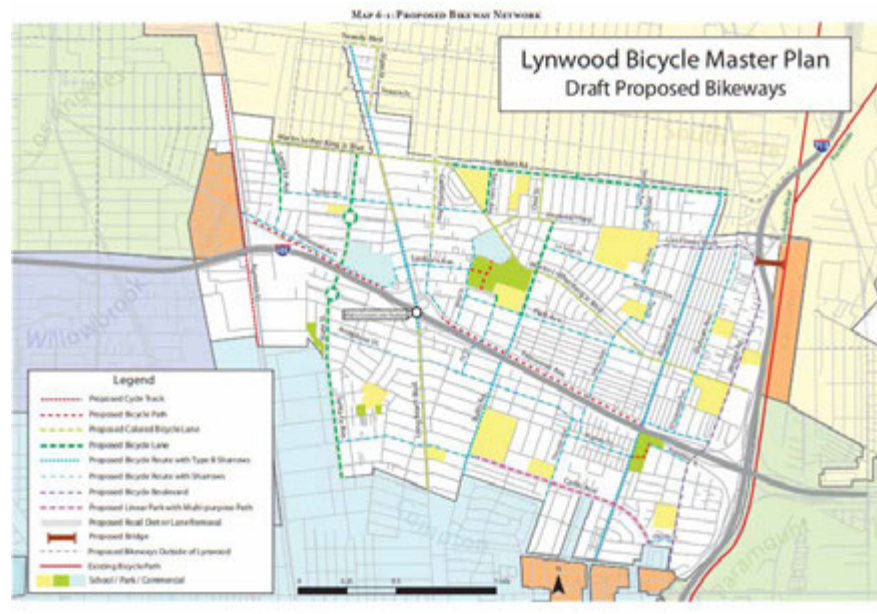
The LTASP encourages a range of land uses, including commercial, retail, entertainment, office, and housing that serve as a gateway to the City. New development in the Specific Plan area potentially includes smaller infill projects, as well as revitalization of the Plaza Mexico shopping center and the Metro Green Line station. The following placemaking opportunity areas and design elements have been identified as the basis for the proposed land uses, design standards, future development intensity, and infrastructure improvement.

- Town Center District
- West Town Center Neighborhood
- Long Beach Boulevard Corridor
- Neighborhood Mixed Use
- Alameda Street Industrial Corridor
- West Imperial Highway Corridor
- East Imperial Highway Corridor
- Industrial District
- St. Francis Medical Center District
- Residential
- Open Space and Recreation
- Gateways
- Multi-Modal Transit

The following pages describe the existing conditions in each placemaking opportunity areas and a summary of the primary design strategies to be embraced as part of any future development project.



FIGURE 2-1 LTASP PLACEMAKING OPPORTUNITIES



Relevant Urban Greening Resources

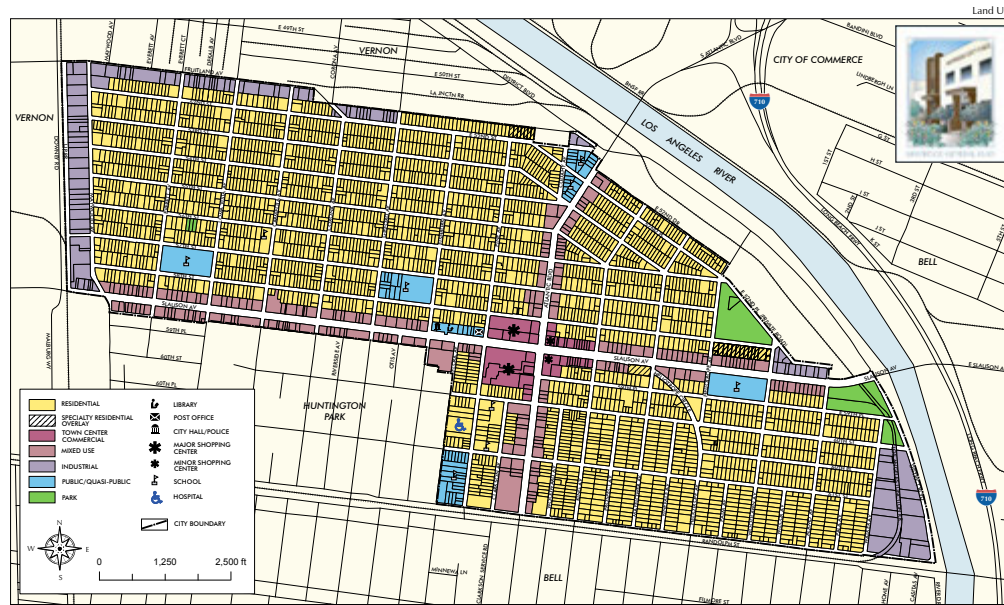
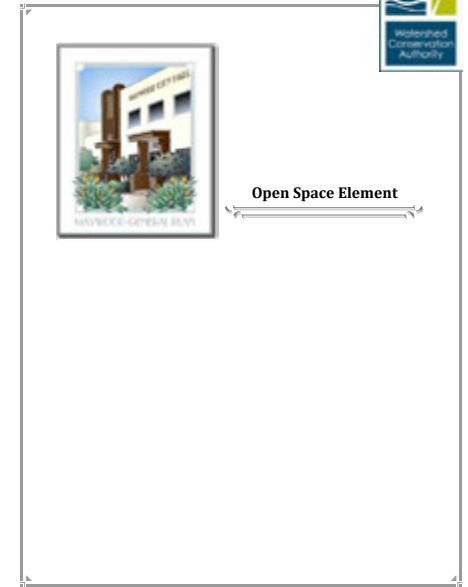
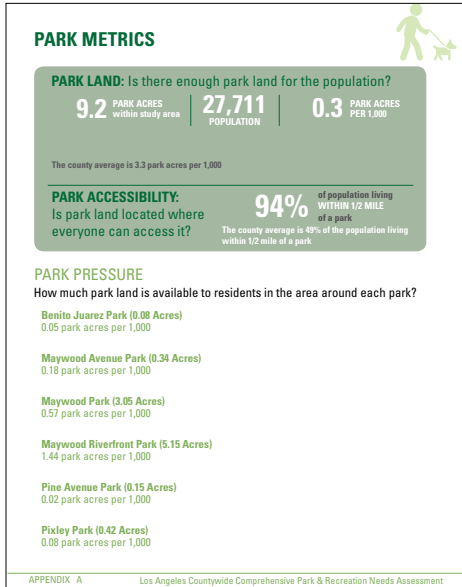


Figure LU-2
Land Use Policy Map
Maywood General Plan

MONTEBELLO

Relevant Urban Greening Resources

we all need PARKS
The Healthy, Thriving and Engaged Communities


**City of Montebello
STUDY AREA PROFILE**
STUDY AREA ID #131

- BASE MAP
- PARK METRICS
- WHERE ARE PARKS MOST NEEDED
- AMENITY QUANTITIES AND CONDITIONS
- PARK NEEDS FRAMEWORK
- PROJECT COST ESTIMATES
- PROJECT REPORTING FORM
- COMMUNITY ENGAGEMENT FORM

Los Angeles Countywide Comprehensive Park & Recreation Needs Assessment
APPENDIX A

SCAG
SOUTHERN CALIFORNIA ASSOCIATION OF GOVERNMENTS

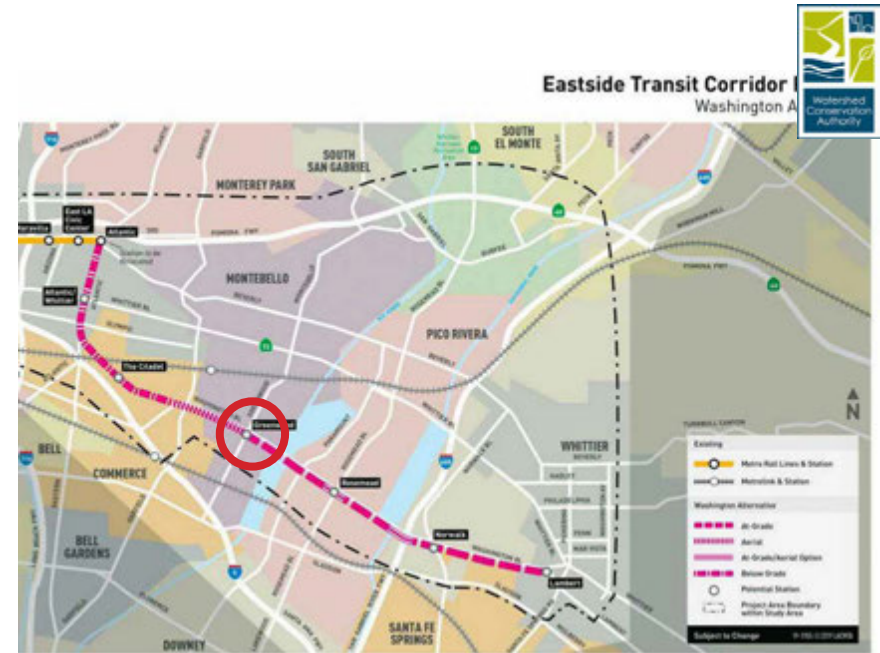
Profile of the City of Montebello
Southern California Association of Governments (SCAG) Regional Council includes 69 districts which represent 151 cities and 6 counties in the SCAG region
SCAG Regional Council District 34 includes Alhambra, Montebello, and Monterey Park
Represented by: Hon. Teresa Real Sebastian




LOCAL PROFILES REPORT 2019

This profile report was prepared by the Southern California Association of Governments and shared with the City of Montebello. SCAG provides local governments with a variety of benefits and services including, for example, data and information, GIS training, planning and technical assistance, and sustainability planning grants.

May 2019
Southern California Association of Governments



MONTEBELLO HILLS
SPECIFIC PLAN



DRAFT
March 2009



NORWALK

Relevant Urban Greening Resources



PARK METRICS

PARK LAND: Is there enough park land for the population?

113.2 PARK ACRES within study area | **106,629** POPULATION | **1.1** PARK ACRES PER 1,000

The county average is 3.3 park acres per 1,000

PARK ACCESSIBILITY: Is park land located where everyone can access it?

47% of population living WITHIN 1/2 MILE of a park
The county average is 49% of the population living within 1/2 mile of a park.

PARK PRESSURE

How much park land is available to residents in the area around each park?

Arthur Gordes Park (8.34 Acres) 0.56 park acres per 1,000	Bob White Park (4.78 Acres) 1.62 park acres per 1,000
Glazier Park (1.19 Acres) 0.78 park acres per 1,000	Hermosillo Park (8.69 Acres) 0.78 park acres per 1,000
Hollifield Park (16.5 Acres) 1.55 park acres per 1,000	John Zimmerman Park (14.13 Acres) 2.44 park acres per 1,000
Lakeside Park (4.04 Acres) 0.74 park acres per 1,000	Little Lake Park (17.27 Acres) 2.65 park acres per 1,000
New River Park (4.83 Acres) 0.78 park acres per 1,000	Norwalk Park (15.5 Acres) 1.2 park acres per 1,000

APPENDIX A Los Angeles Countywide Comprehensive Park & Recreation Needs Assessment

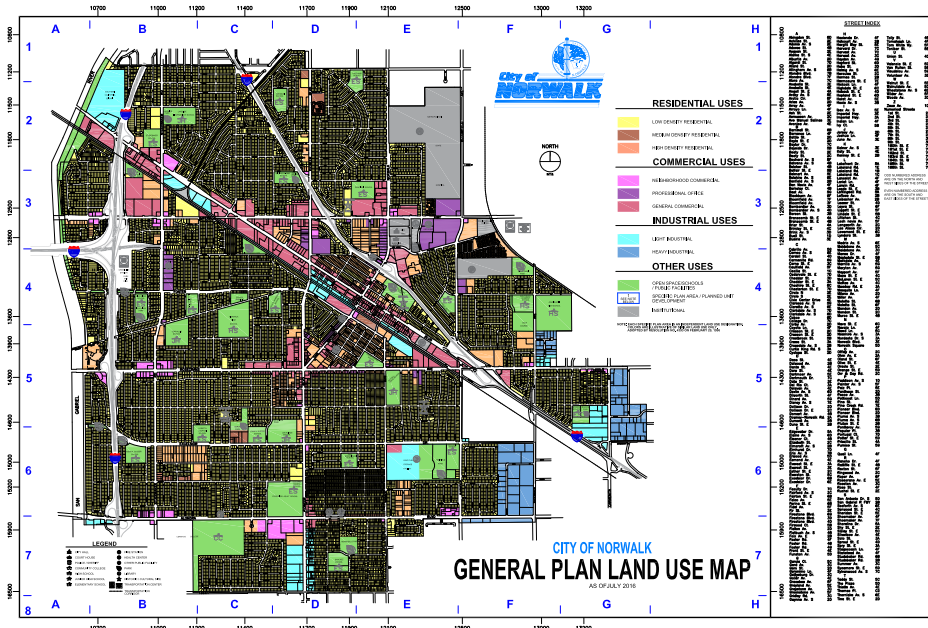
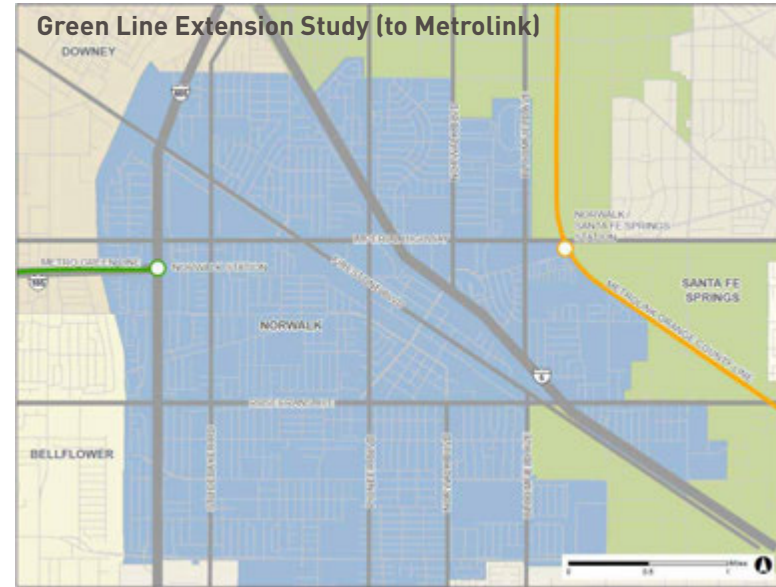
Profile of the City of Norwalk

Southern California Association of Governments (SCAG) Regional Council includes 69 districts which represent 191 cities and 6 counties in the SCAG region
SCAG Regional Council District 23 includes Artesia, Cerritos, Hawaiian Gardens, and Norwalk
District 23 is currently Vacant.

LOCAL PROFILES REPORT 2019

This profile report was prepared by the Southern California Association of Governments and shared with the City of Norwalk. SCAG provides local governments with a variety of benefits and services including, for example, data and information, GIS training, planning and technical assistance, and sustainability planning grants.

May 2019
Southern California Association of Governments



NORWALK GREEN LINE EXTENSION STUDY

SOUTHERN CALIFORNIA ASSOCIATION OF GOVERNMENTS

ENVISIONING COMMUNITY CONNECTIONS

The Southern California Association of Governments (SCAG), in collaboration with the Los Angeles County Metropolitan Transportation Authority (Metrolink) and the Cities of Norwalk and Santa Fe Springs, is conducting a planning study to identify and evaluate feasible alternatives for extending the Metro Green Line east from the Norwalk Station to connect to the Norwalk/Santa Fe Springs Metrolink Station. The goal is to discover how this strategic connection can best serve the economic, cultural and quality of life needs of Norwalk, while providing economic and mobility benefits for the entire region.

TRANSPORTATION & LAND USE CONNECTIONS

The Norwalk Green Line Extension Study will evaluate alternative routes, including street level and bridge or subway options, and potential station locations for the Green Line extension. The study will also identify ways to provide safe and convenient access to stations called "first/last mile" strategies, for bicycles, pedestrians, bus transit and automobiles. Just as importantly, the study will identify and evaluate opportunities to develop transit-oriented land uses around the stations that support community needs and goals.

LOCAL & REGIONAL CONNECTIONS

The study will evaluate how the Green Line extension can provide residents with improved connections to destinations and opportunities across Southern California through the Metro Rail system, Metrolink commuter rail and future projects such as the Los Angeles International Airport automated people mover and California High-Speed Rail. Residents, workers and travelers will benefit by having access to an attractive alternative to driving, while helping reach regional, state and federal goals for easing congestion and reducing greenhouse gases.

GET CONNECTED WITH THE STUDY

SCAG is seeking input from residents, businesses and community stakeholders to understand the possible community, economic and environmental benefits and costs of the project, and to help identify and shape the development of transportation and land use strategies to that best support community goals. The study process seeks a consensus-driven vision of how the Green Line extension, and the land uses that may develop with it, can benefit Norwalk and Southern California.

The study is anticipated to be completed by March 2018, with the following key activities (schedule is subject to change):

- Fall 2016: Study initiation
- January 2017: Community "open house" meetings
- Spring/Summer 2017: Alternatives development & evaluation
- Spring/Summer 2017: Land use & station planning
- July 2017: Community "open house" meetings
- Winter 2017/2018: Study conclusion & recommendations

Community stakeholders will have the opportunity to participate in two rounds of community meetings held at key points in the study.

Note: links to websites can be accessed by clicking on text and/or images

PARAMOUNT

Relevant Urban Greening Resources



we all need PARKS
for healthy, vibrant and resilient communities

City of Paramount STUDY AREA PROFILE

STUDY AREA ID #140

- BASE MAP
- PARK METRICS
- WHERE ARE PARKS MOST NEEDED
- AMENITY QUANTITIES AND CONDITIONS
- PARK NEEDS FRAMEWORK
- PROJECT COST ESTIMATES
- PROJECT REPORTING FORM
- COMMUNITY ENGAGEMENT FORM

Los Angeles Countywide Comprehensive Park & Recreation Needs Assessment
APPENDIX A

SCAG
SOUTHERN CALIFORNIA ASSOCIATION OF GOVERNMENTS

Profile of the City of Paramount

Southern California Association of Governments (SCAG) Regional Council includes 69 districts which represent 191 cities and 6 counties in the SCAG region
SCAG Regional Council District 24 includes Bellflower, Lakewood, Paramount, and Signal Hill
Represented by: Hon. Sonny R. Santa Ines

LOCAL PROFILES REPORT 2019

This profile report was prepared by the Southern California Association of Governments and shared with the City of Paramount. SCAG provides local governments with a variety of benefits and services including, for example, data and information, GIS training, planning and technical assistance, and sustainability planning grants.

May 2019
Southern California Association of Governments

PROGRESS IN PARAMOUNT

AN OCCASIONAL LOOK AT WAYS THE CITY HAS CHANGED OVER THE YEARS VOL. 1 NO. 3

BRINGING MORE RECREATION TO PARAMOUNT

Paramount is one of the smallest cities in Los Angeles County land-wise and one of the most densely populated. There is little open space other than the City's park system. It has been difficult to build more parks due to cost and availability of land. City officials have been on a constant search for funds to increase acreage and facilities.

This has paid off over the last 30 years in a number of creative ways. In fact, the Los Angeles and San Gabriel Rivers Watershed Council recognized Paramount in the early 2000s for its "aggressive pursuit of parks and open space."

During this time, while the City's population has increased by nearly 42% with investments of over \$25 million, much of that covered by State and County grant money. Here is a review of the growth in recreational options in Paramount.

- 1990 ALL AMERICAN PARK**
Caltrans wanted a basin for runoff from the 105, the City turned it into a 6.5-acre park.
- 1993 PARAMOUNT PARK EXPANSION**
The park was enlarged by building on DWP and Metro rights of way, which added basketball courts, parking, and dramatically more open land.
- 1996 POCKET PARKS**
The City enters no-fee lease agreements with vacant lot owners. Paramount has had up to ten such parks, covering as much as three acres in total. The price over the years to create these would have been more than \$1 million. The City has spent less than \$200,000.
- 1999 PARAMOUNT POND**
The downtown public plaza and sculpture garden with an ice-skating theme and 30-foot tall Sequoia that is featured at the Annual Holiday Tree Lighting Ceremony.
- 2001 VILLAGE SKATE PARK**
A group of young people asked that a skate park be constructed. Impressed with the request, the City built the project, even using design input from the skaters.
- 2002 NEW REC CENTER**
The City received a \$1.05 million state grant to build a new center at Progress Park, now called the Mariposa Center. The 4,000-square-foot facility replaced a small preschool that was originally a house built in the 1940s.

PROGRESS IN PARAMOUNT

AN OCCASIONAL LOOK AT WAYS THE CITY HAS CHANGED OVER THE YEARS VOL. 1 NO. 1

A Streetscape Transformed

It was the late 1970s, and Paramount wasn't looking so good. The City had been ravaged by urban blight due to old County zoning rules, a failing economy, and an aging infrastructure.

Much has been done since then to renew Paramount thanks to updated zoning laws, design guidelines, code enforcement, commercial property rehabs, and lots of landscaping.

From the disco days of the '70s to now, it's a different place, a much nicer place to call home. Take a look at Yesterday and Today.

Yesterday ... southwest corner, Paramount & Jackson Today

Yesterday ... east side of Paramount Blvd., south of Alondra Today

Un Paisaje Urbano Transformado

En el final de la década de 1970, y Paramount no tenía muy bien. La Ciudad había sido invadida por la plaga urbana debido a viejas regulaciones de zonificación, una economía decaída, y una infraestructura envejecida.

Mucho se ha hecho desde entonces para renovar a Paramount gracias a leyes actualizadas de zonificación, guías de diseño, la implementación de códigos, la rehabilitación de propiedades comerciales, y muchos áreas ajardinadas.

Desde los días de la música disco de los años 70 hasta hoy, es un lugar diferente, un lugar mucho mejor para llamar hogar. Echen una mirada al ayer... y al hoy.

Paramount General Plan

Final Paramount General Plan

**City of Paramount
Community Development Department
16400 Colorado Avenue
Paramount, California 90723**

**Adopted:
August 7, 2007**

Final - August 2007
Page 1

Paramount / South Gate Station Area Plan

DRAFT
MARCH 15, 2019



Swap Meet

AT THE
PARAMOUNT DRIVE-IN THEATRE
PARAMOUNT, CALIF.
(THE CITY OF PROGRESS)

The SWAP MEET at the Paramount Drive-In Theatre, on Paramount Blvd. in the City of Paramount, California is today the largest operation of its kind in the world. Similar operations throughout the world have been known as: Giant Bazaar, Flea Market, Thieves Market, Trading Post, etc. The operation at Paramount began in December 1955, but did not grow to capacity till 1963.

Relevant Urban Greening Resources

we all need PARKS
By Healthy Living and Smart & Sustainable

**City of Pico Rivera
STUDY AREA PROFILE**
STUDY AREA ID #110

- BASE MAP
- PARK METRICS
- WHERE ARE PARKS MOST NEEDED
- AMENITY QUANTITIES AND CONDITIONS
- PARK NEEDS FRAMEWORK
- PROJECT COST ESTIMATES
- PROJECT REPORTING FORM
- COMMUNITY ENGAGEMENT FORM

Los Angeles Countywide Comprehensive Park & Recreation Needs Assessment
APPENDIX A

**PICO RIVERA
Urban Greening**

ABOUT THE URBAN GREENING PLAN

The Pico Rivera Urban Greening Plan includes a safe and connected bicycle and pedestrian network, identified new green spaces, and created a unifying street tree canopy plan for more walkable and bikeable neighborhoods. The Urban Greening Plan was made possible by the State of California Natural Resources Agency with funds by the Safe Drinking Water, Water Quality and Supply, Flood Control, River and Coastal Protection Act of 2006.

WHAT ARE THE BENEFITS OF URBAN GREENING?

Urban Greening can provide numerous environmental and community benefits by reducing flooding and sewer overflow by absorbing large amounts of stormwater. This provides wildlife habitat, helping to maintain air quality, and providing green space for neighborhood socializing and community building. Urban Greening can also help to create "Green Streets" that enable safe and attractive access throughout the city by foot, transit, bicycle and car.

What does a "green street" look like?



City of Pico Rivera

General Plan
October 2014



SANTA FE SPRINGS



Relevant Urban Greening Resources



PARK METRICS

PARK LAND: Is there enough park land for the population?
101.5 PARK ACRES within study area | **17,630** POPULATION | **5.8** PARK ACRES PER 1,000

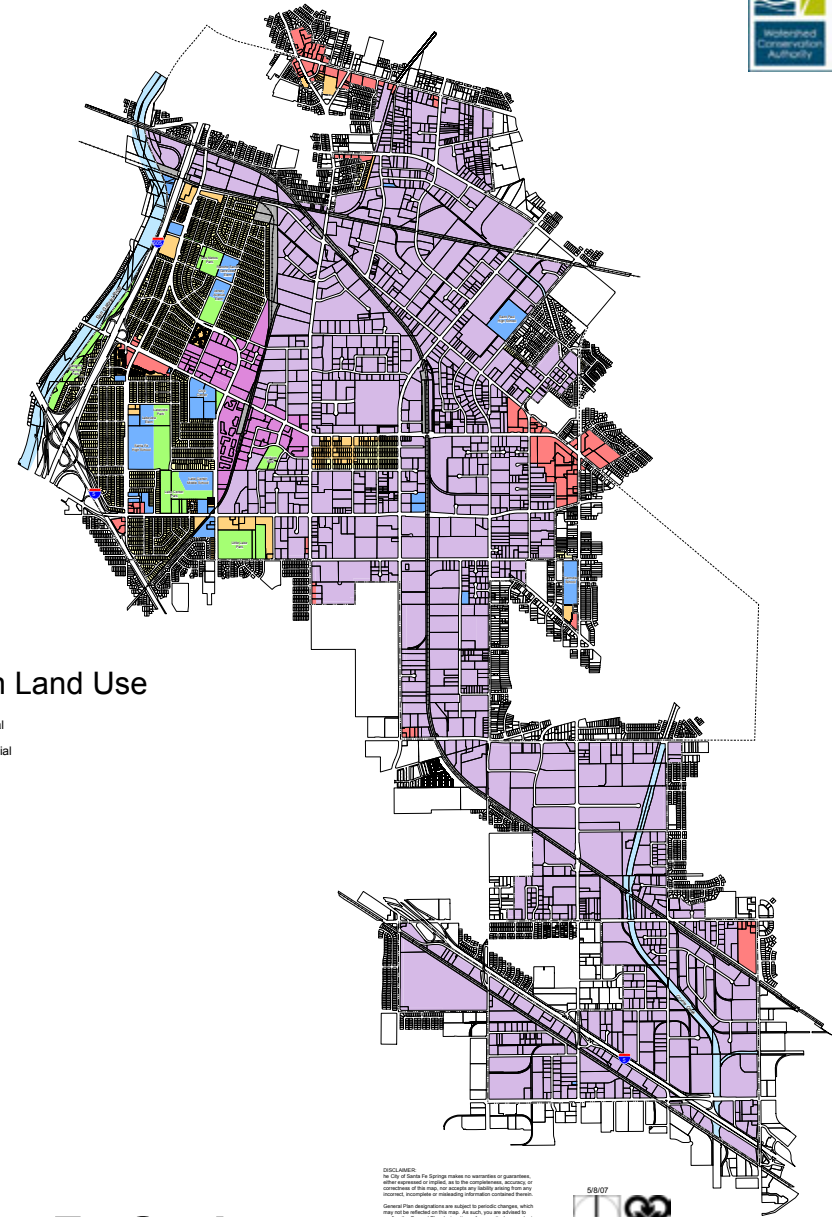
The county average is 3.3 park acres per 1,000

PARK ACCESSIBILITY: Is park land located where everyone can access it?
67% of population living WITHIN 1/2 MILE of a park
 The county average is 46% of the population living within 1/2 mile of a park

PARK PRESSURE: How much park land is available to residents in the area around each park?

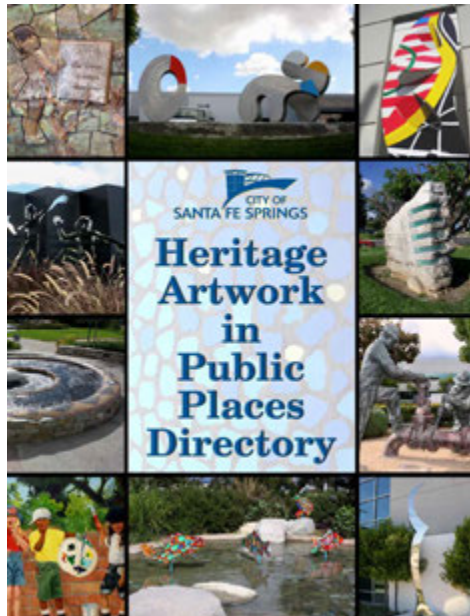
Amelia Mayberry Park (14.44 Acres) 1.09 park acres per 1,000	Frontier Park (4.17 Acres) 0.6 park acres per 1,000
Heritage Park (12.81 Acres) 38.8 park acres per 1,000	Lake Center Athletic Park (17.21 Acres) 5.11 park acres per 1,000
Lakeview Park (5.84 Acres) 3.57 park acres per 1,000	Little Lake Park (17.27 Acres) 2.65 park acres per 1,000
Los Nietos Park (11.79 Acres) 3.22 park acres per 1,000	Santa Fe Springs Athletic Fields (6.97 Acres) 2.81 park acres per 1,000
Santa Fe Springs Park (9.08 Acres) 1.64 park acres per 1,000	Soaring Dreams Plaza (1.95 Acres) 22.88 park acres per 1,000

APPENDIX A Los Angeles Countywide Comprehensive Park & Recreation Needs Assessment



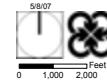
General Plan Land Use

- Single Family Residential
- Multiple Family Residential
- Commercial
- Business Park
- Industrial
- Public Facilities
- Open Space
- Railroad Right-of-Way
- River and Creeks
- City Boundary
- Sphere of Influence



DISCLAIMER:
The City of Santa Fe Springs makes no warranties or guarantees, either expressed or implied, in the application, accuracy, or completeness of this map. We reserve the right to modify, update, or discontinue this map at any time without notice. We are not liable for any damages or losses resulting from the use of this map. We encourage you to verify the information on this map with the City of Santa Fe Springs Planning Department.

City of Santa Fe Springs
17175 Broadway Road
Santa Fe Springs, CA 90703
(562) 488-0511 x7550



SIGNAL HILL

Relevant Urban Greening Resources

**City of Signal Hill
STUDY AREA PROFILE**
STUDY AREA ID #141

- BASE MAP
- PARK METRICS
- WHERE ARE PARKS MOST NEEDED
- AMENITY QUANTITIES AND CONDITIONS
- PARK NEEDS FRAMEWORK
- PROJECT COST ESTIMATES
- PROJECT REPORTING FORM
- COMMUNITY ENGAGEMENT FORM

Los Angeles Countywide Comprehensive Park & Recreation Needs Assessment
APPENDIX A

Profile of the City of Signal Hill

LOCAL PROFILES REPORT 2019

This profile report was prepared by the Southern California Association of Governments and shared with City of Signal Hill. SCAG provides local governments with a variety of benefits and services including, for example, data and information, GIS training, planning and technical assistance, and sustainability planning grants.

May 2019
Southern California Association of Governments

CITY OF SIGNAL HILL

General Plan

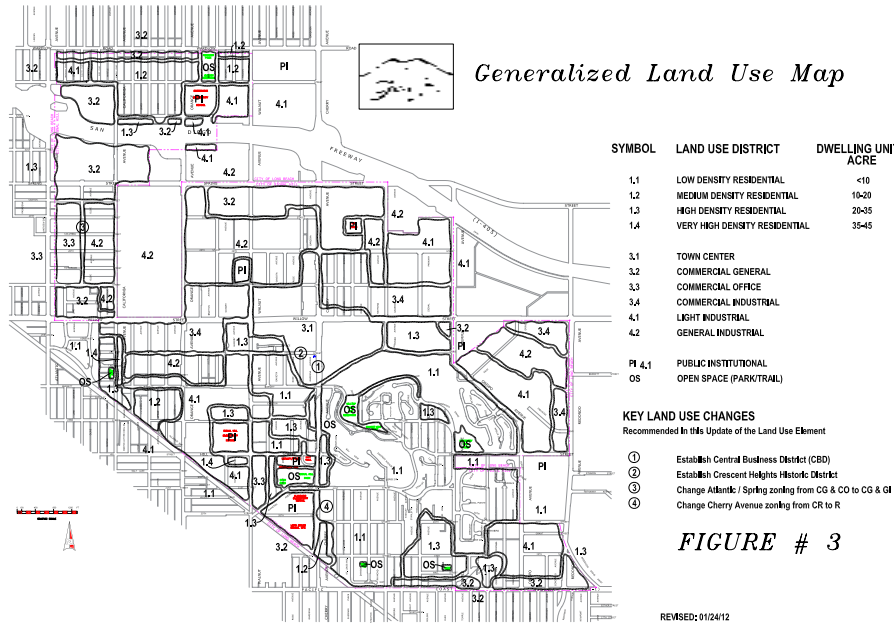
CIRCULATION ELEMENT

Updated December 2009

Prepared by the City of Signal Hill in collaboration with RGP Planning & Development Services

City of Signal Hill Strategic Plan
2015-2019

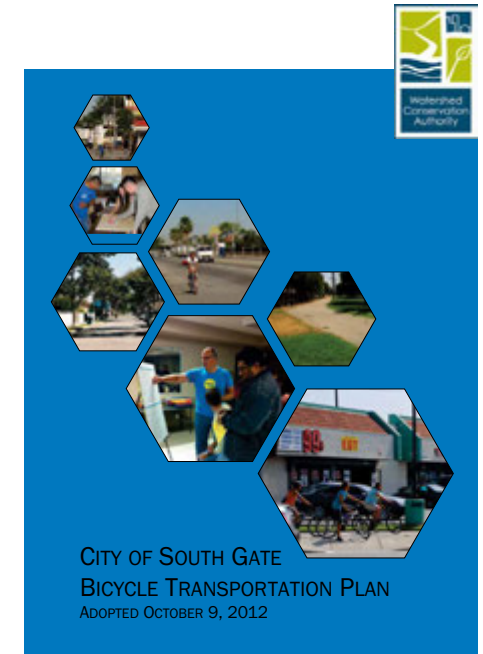
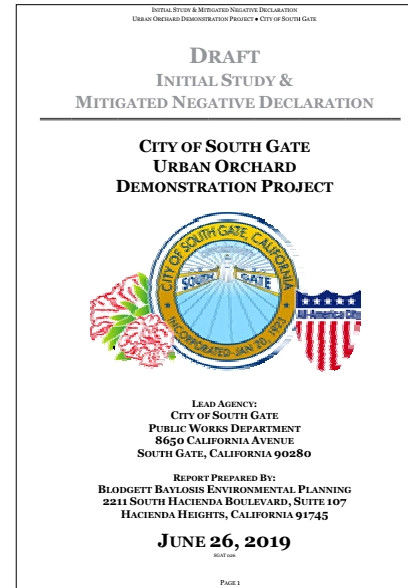
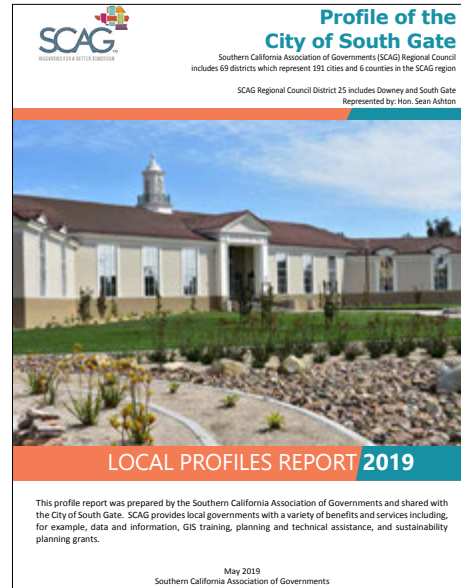
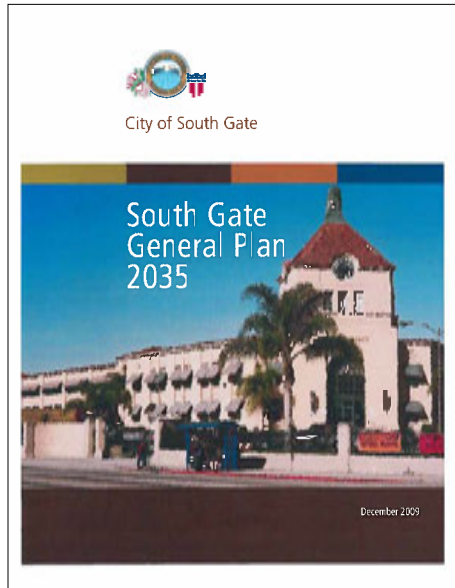
Signal Hill



Note: links to websites can be accessed by clicking on text and/or images

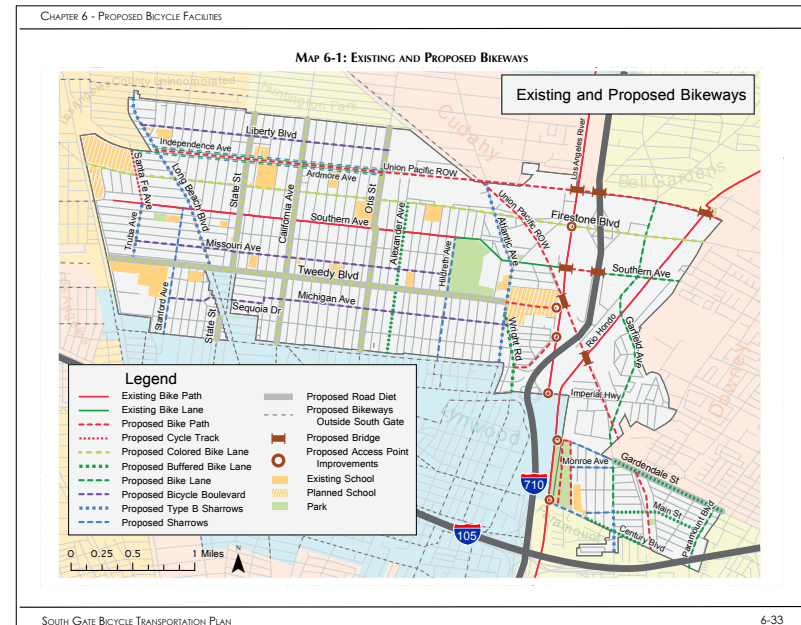
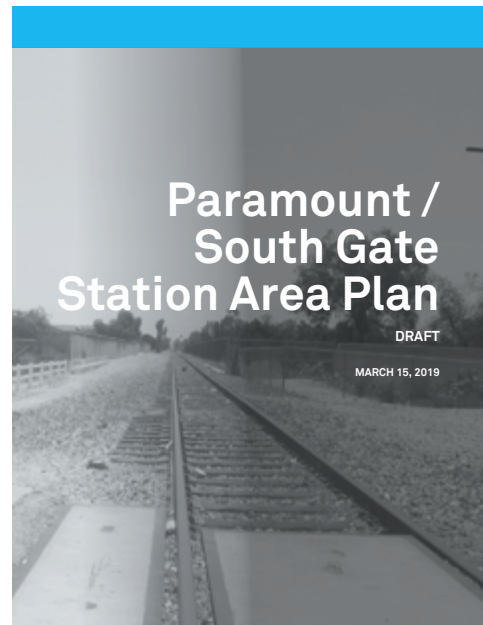
SOUTH GATE

Relevant Urban Greening Resources



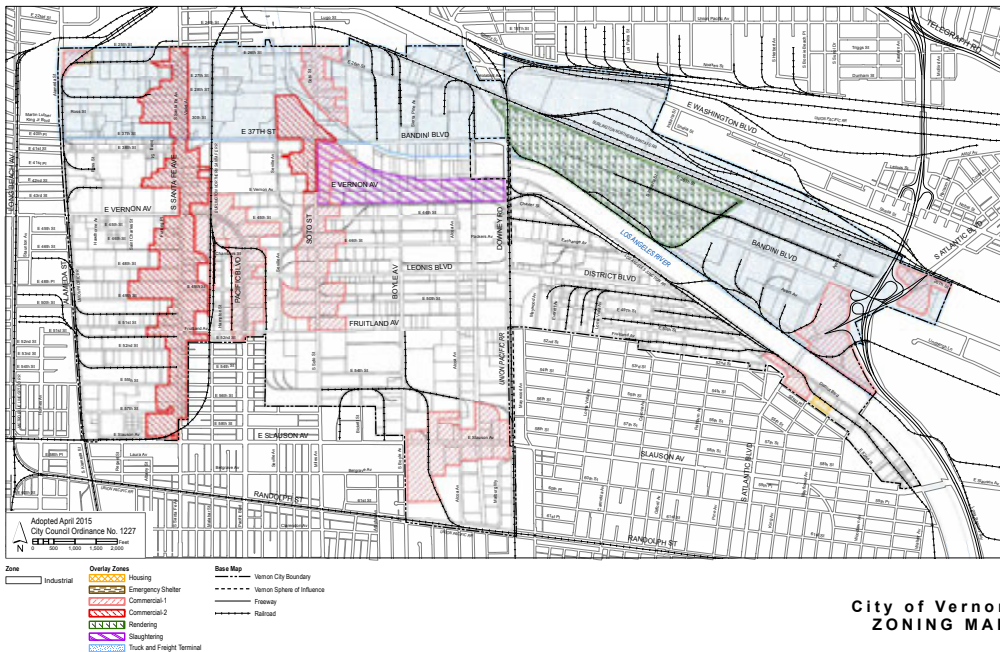
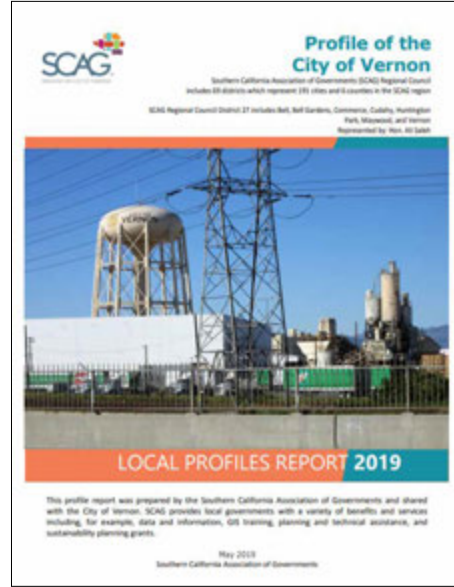
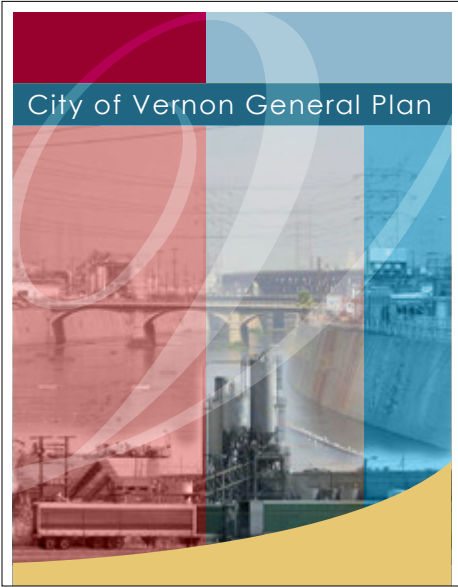
Gateway District FRAMEWORK OPTIONS

Draft Framework Options present different treatments for plaza size and orientation, street access, and parcel size in the Firestone & Atlantic intersection area.

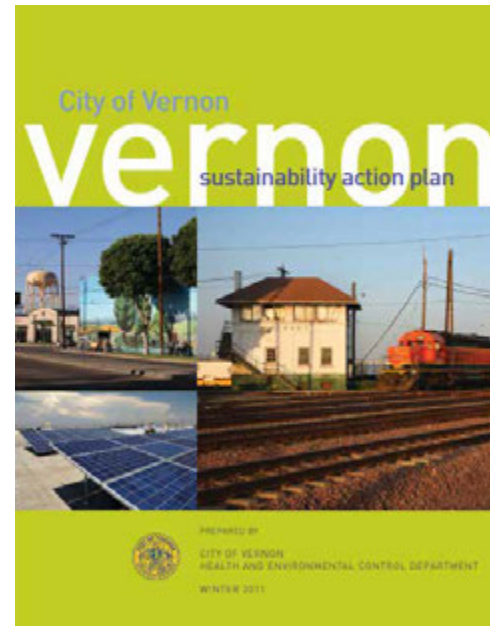


Note: links to websites can be accessed by clicking on text and/or images

Relevant Urban Greening Resources



City of Vernon
ZONING MAP





Relevant Urban Greening Resources

we all need PARKS
for healthy living and enjoyment of communities

**City of Whittier
STUDY AREA PROFILE**
STUDY AREA ID #187

- BASE MAP
- PARK METRICS
- WHERE ARE PARKS MOST NEEDED
- AMENITY QUANTITIES AND CONDITIONS
- PARK NEEDS FRAMEWORK
- PROJECT COST ESTIMATES
- PROJECT REPORTING FORM
- COMMUNITY ENGAGEMENT FORM

Los Angeles Countywide Comprehensive Park & Recreation Needs Assessment
APPENDIX A

SCAG
SOUTHERN CALIFORNIA ASSOCIATION OF GOVERNMENTS

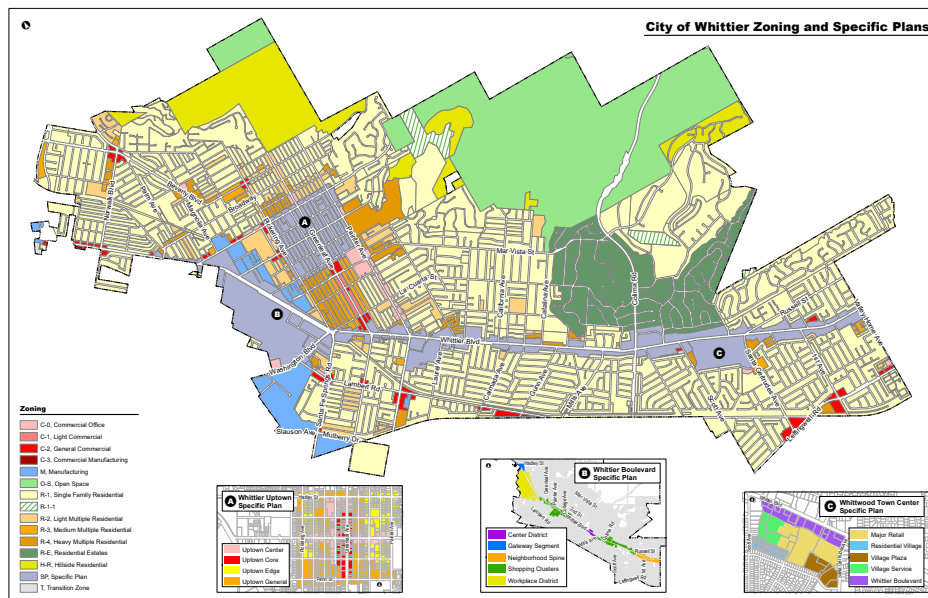
Profile of the City of Whittier
Southern California Association of Governments (SCAG) Regional Council includes 49 districts which represent 131 cities and 6 counties in the SCAG region
SCAG Regional Council District 31 includes La Habra Heights, La Mirada, Pico Rivera, Santa Fe Springs, and Whittier
Represented by: Hon. Steve De Ruse

LOCAL PROFILES REPORT 2019

This profile report was prepared by the Southern California Association of Governments and shared with the City of Whittier. SCAG provides local governments with a variety of benefits and services including, for example, data and information, GIS training, planning and technical assistance, and sustainability planning grants.

May 2019
Southern California Association of Governments

**Whittier Boulevard
Specific Plan**



UPTOWN WHITTIER SPECIFIC PLAN
Whittier, California
Approved: November 18, 2008
Amended: June 24, 2014

Moule & Polyzoides, Architects and Urbanists
For the City of Whittier, California